

ONE Service ●

2025 EAST-WEST SERVICE

via Suez - Effective from February 2025

YOUR
NUMBER
ONE
SHIPPING
PARTNER



ONE
OCEAN NETWORK EXPRESS

AS ONE, WE CAN.

The effective date is subject to regulatory clearance

TABLE OF CONTENTS

- Asia – North Europe (via Suez)
- Asia – Mediterranean (via Suez)
- Asia – Pacific Southwest
- Asia – Pacific Northwest
- Asia – East Coast North America (via Suez)
- Transatlantic



Asia - North Europe Service (via Suez)

7 choices of services that provide extensive coverage of key ports to meet your direct connection needs across Asia and Europe.

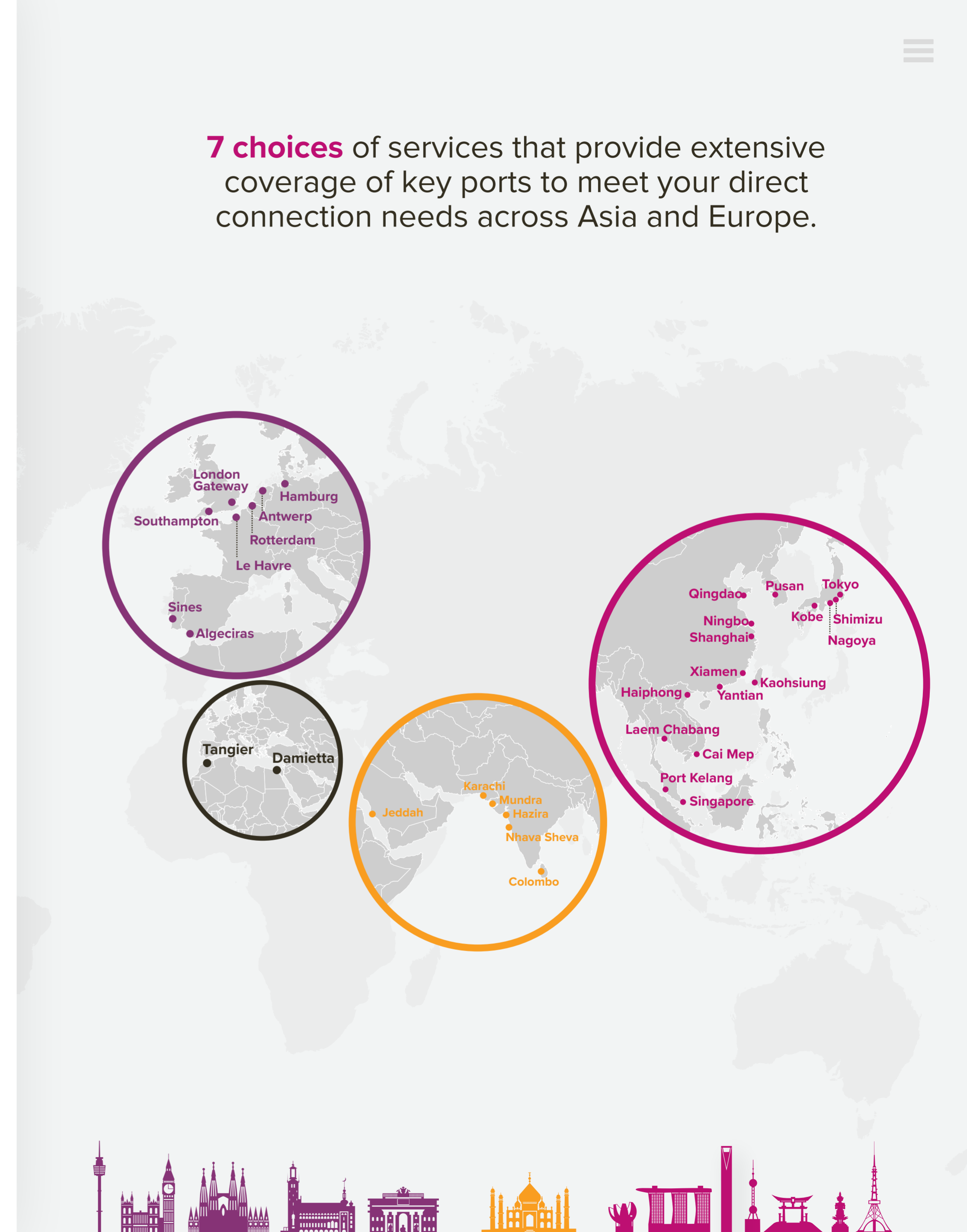
FP1	FP2	FE3	FE4	FE5	FE6	IOX
Shimizu	Tokyo	Qingdao	Shanghai	Qingdao	Ningbo	Karachi
Kobe	Kobe	Pusan	Ningbo	Pusan	Shanghai	Hazira
Nagoya	Shanghai	Shanghai	Kaohsiung	Ningbo	Xiamen	Mundra
Tokyo	Ningbo	Xiamen	Yantian	Shanghai	Singapore	Nhava Sheva
Singapore	Yantian	Singapore	Cai Mep	Yantian	Le Havre	Colombo
Damietta	Singapore	Algeciras	Singapore	Singapore	Rotterdam	London Gateway
Rotterdam	Tangier	Rotterdam	Damietta	Sines	Hamburg	Rotterdam
Hamburg	Southampton	Hamburg	Rotterdam	Antwerp	Antwerp	Hamburg
Le Havre	Antwerp	Southampton	Hamburg	Hamburg	Port Kelang	Antwerp
Singapore	Jeddah	Singapore	Le Havre	Rotterdam	Singapore	Jeddah
Kobe	Singapore	Yantian	Algeciras	Antwerp	Laem Chabang	Karachi
Nagoya	Laem Chabang	Qingdao	Singapore	Le Havre	Cai Mep	
Tokyo	Cai Mep		Kaohsiung	London Gateway		
	Haiphong		Shanghai	Yantian		
	Yantian			Qingdao		

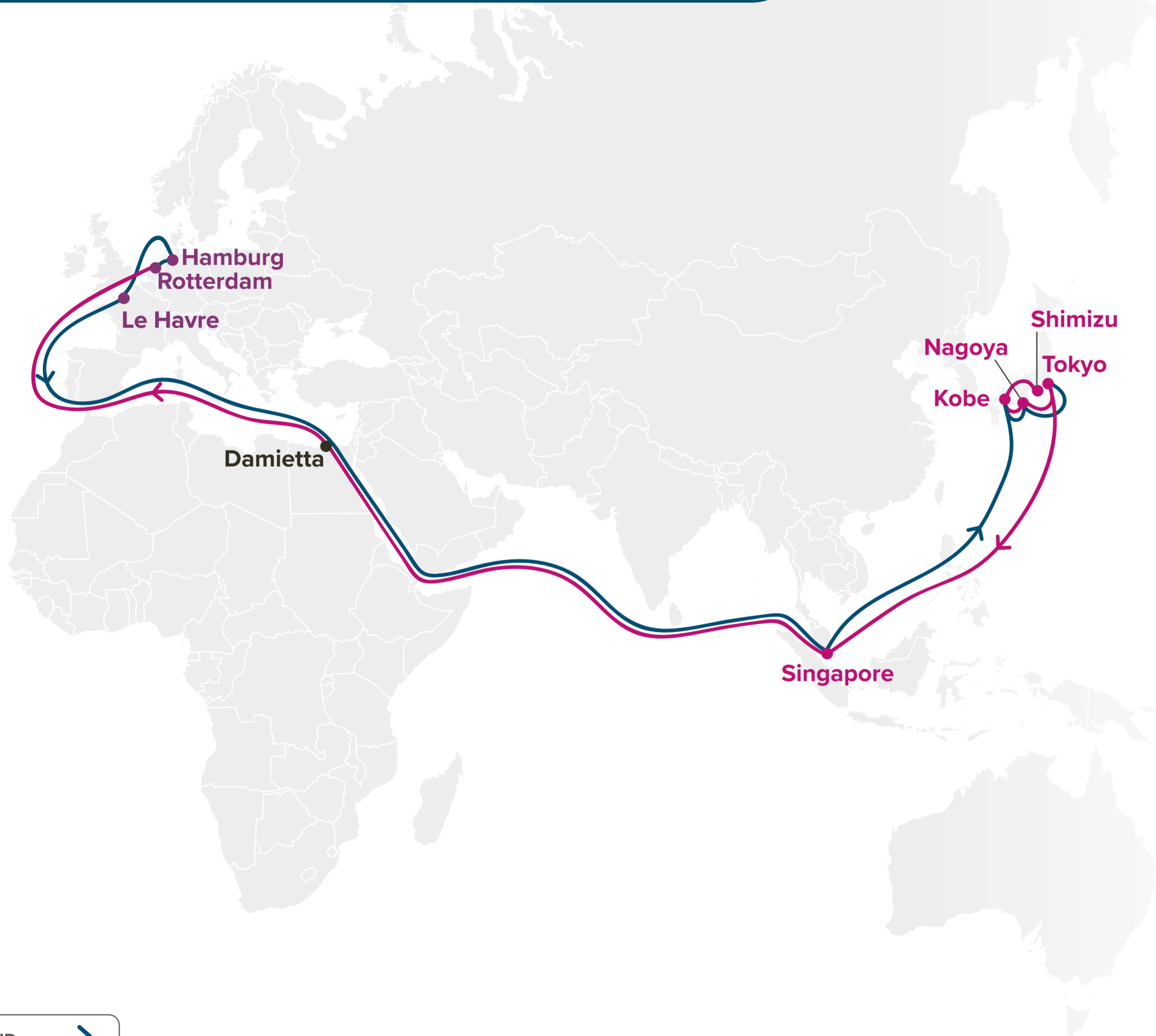
FP1: Far East Pacific 1
FP2: Far East Pacific 2

FE3: Far East -Europe 3
FE4: Far East -Europe 4

FE5: Far East -Europe 5
FE6: Far East -Europe 6

IOX: Indian Ocean Express





EASTBOUND →
WESTBOUND ←

Key Service Strength

- ▣ Dedicated Japan service that connects Northern Europe
- ▣ Covering major Japan ports, like Tokyo, Nagoya and Kobe but also unique port, such as Shimizu

Port Rotation

(Terminals are subject to change)

ORIGIN	CODE	ETA	ETD	TERMINAL
SHIMIZU	SMZ	TBD	TBD	TO BE DETERMINED (TBD)
KOBE	UKB	-	-	-
NAGOYA	NGO	-	-	-
TOKYO	TYO	-	-	-
SINGAPORE	SIN	-	-	-
DAMIETTA	DAM	-	-	-
ROTTERDAM	RTM	-	-	-
HAMBURG	HAM	-	-	-
LE HAVRE	LEH	-	-	-
SINGAPORE	SIN	-	-	-
KOBE	UKB	-	-	-
NAGOYA	NGO	-	-	-
TOKYO	TYO	-	-	-

Transit Time

W/B	DAM	RTM	HAM	LEH	E/B	SIN	UKB	NGO	TYO
SMZ	28	37	40	44	RTM	32	41	44	47
UKB	26	35	38	42	HAM	29	38	41	44
NGO	24	33	36	40	LEH	25	34	37	40
TYO	22	31	34	38					
SIN	14	23	26	30					

Key Service Strength

- Calling major Japan ports with China port coverage
- Express connection to the UK
- Direct Thailand / Vietnam (Cai Mep / Haiphong) connection from North Europe

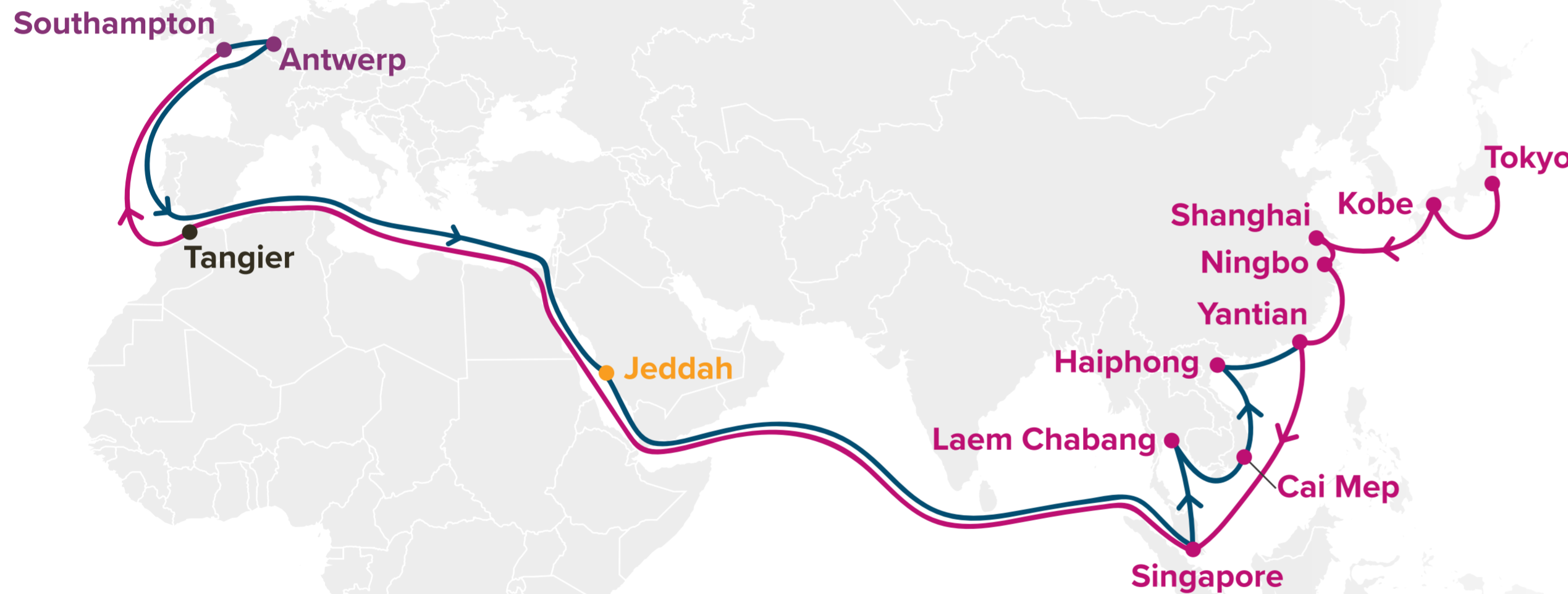
Port Rotation

(Terminals are subject to change)

ORIGIN	CODE	ETA	ETD	TERMINAL
TOKYO	TYO	TBD	TBD	TO BE DETERMINED (TBD)
KOBE	UKB	-	-	-
SHANGHAI	SHA	-	-	-
NINGBO	NGB	-	-	-
YANTIAN	YTN	-	-	-
SINGAPORE	SIN	-	-	-
TANGIER	TNG	-	-	-
SOUTHAMPTON	SOU	-	-	-
ANTWERP	ANR	-	-	-
JEDDAH	JED	-	-	-
SINGAPORE	SIN	-	-	-
LAEM CHABANG	LCH	-	-	-
CAI MEP	CMP	-	-	-
HAIPHONG	HPH	-	-	-
YANTIAN	YTN	-	-	-

Transit Time

W/B	TNG	SOU	ANR	E/B	JED	SIN	LCH	CMP	HPH	YTN
TYO	36	41	45	SOU	18	35	39	43	46	49
UKB	34	39	43	ANR	15	32	26	40	43	46
SHA	29	34	38							
NGB	27	32	36							
YTN	24	29	33							
SIN	19	24	28							



Key Service Strength

Express service connecting China / South Korea and North Europe

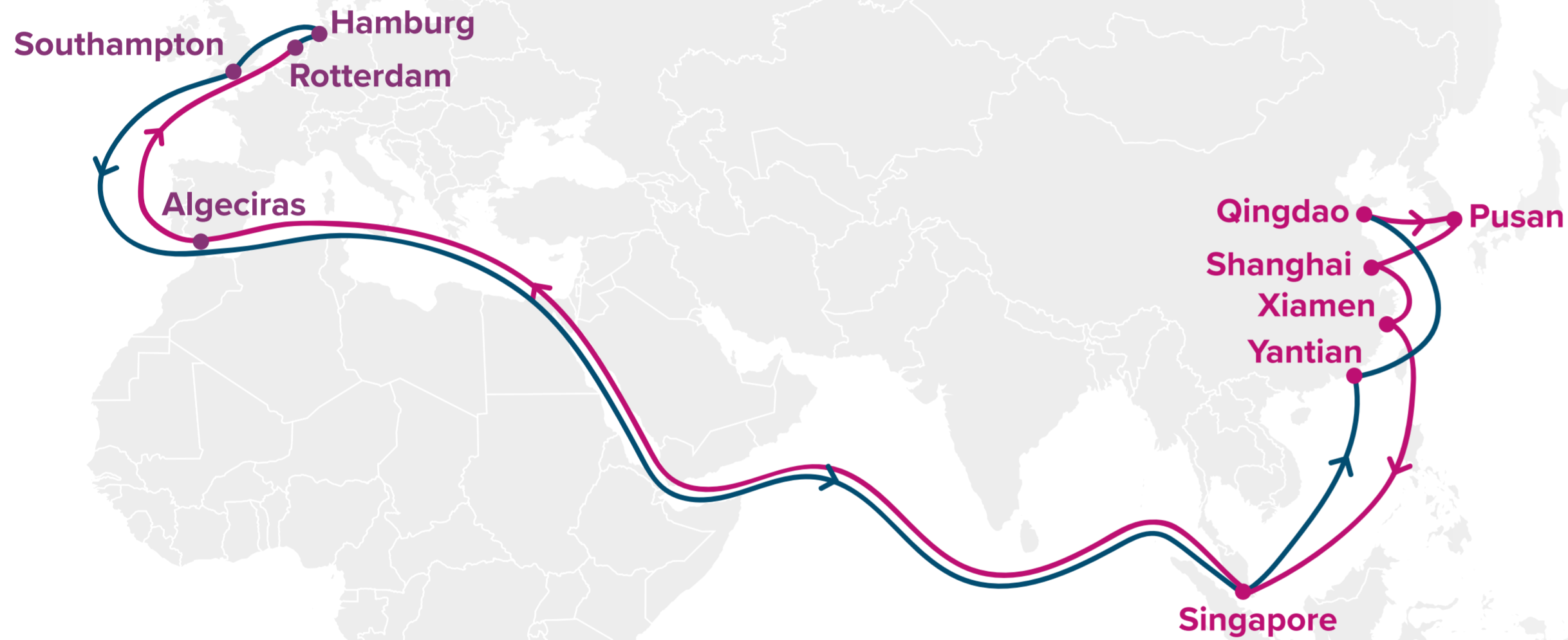
Port Rotation

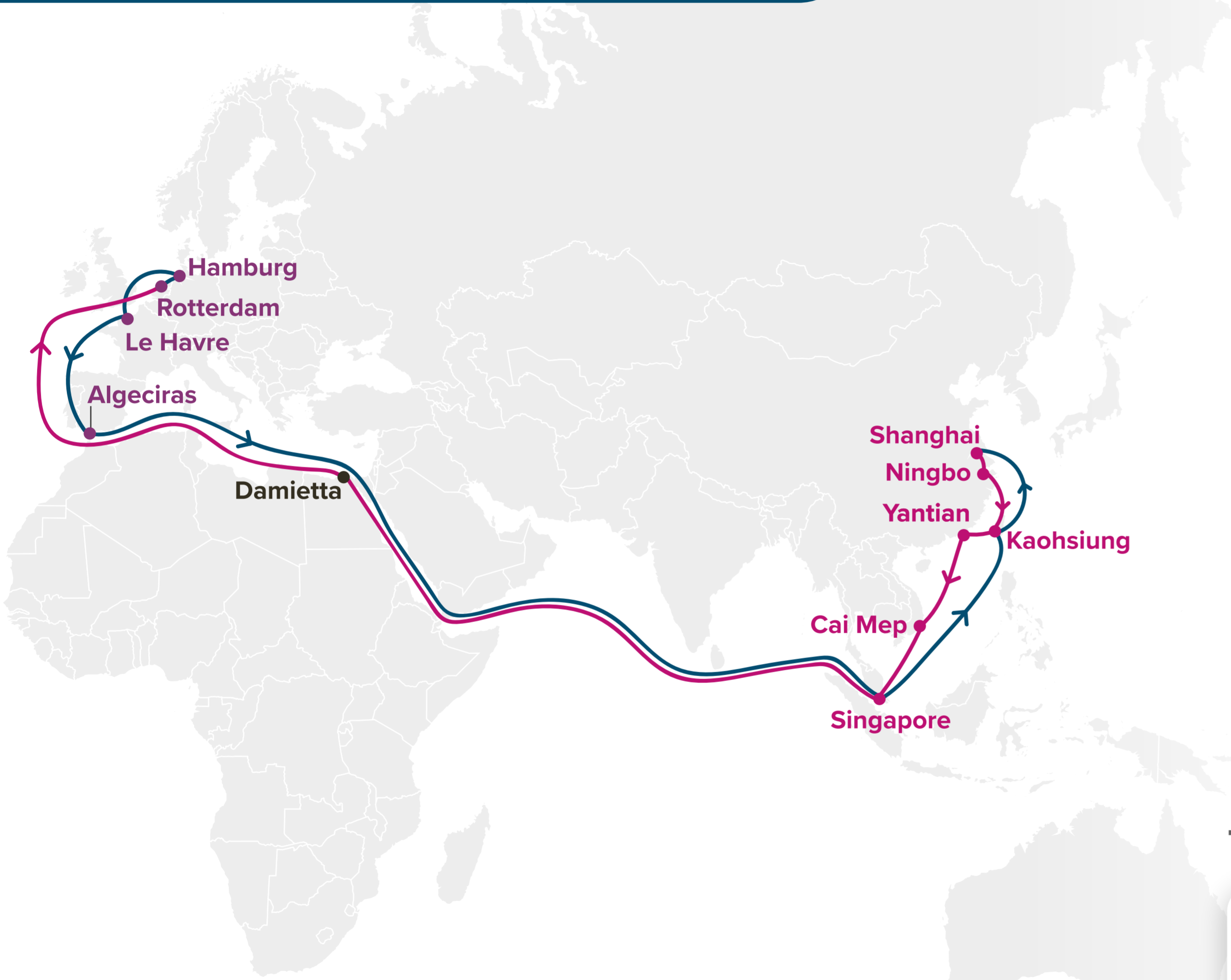
(Terminals are subject to change)

ORIGIN	CODE	ETA	ETD	TERMINAL
QINGDAO	TAO	TBD	TBD	TO BE DETERMINED (TBD)
PUSAN	PUS	-	-	-
SHANGHAI	SHA	-	-	-
XIAMEN	XMN	-	-	-
SINGAPORE	SIN	-	-	-
ALGECIRAS	ALG	-	-	-
ROTTERDAM	RTM	-	-	-
HAMBURG	HAM	-	-	-
SOUTHAMPTON	SOU	-	-	-
SINGAPORE	SIN	-	-	-
YANTIAN	YTN	-	-	-
QINGDAO	TAO	-	-	-

Transit Time

W/B	ALG	RTM	HAM	SOU	E/B	SIN	YTN	TAO	PUS	SHA	XMN
TAO	36	40	45	50	RTM	35	41	45	49	52	55
PUS	33	37	42	47	HAM	31	37	41	45	48	51
SHA	29	33	38	43	SOU	27	33	37	41	44	47
XMN	27	31	36	41							
SIN	20	24	29	34							





Key Service Strength

- █ Direct connection from China and Southeast Asia to Northern Europe
- █ Express service from France to Asia major ports

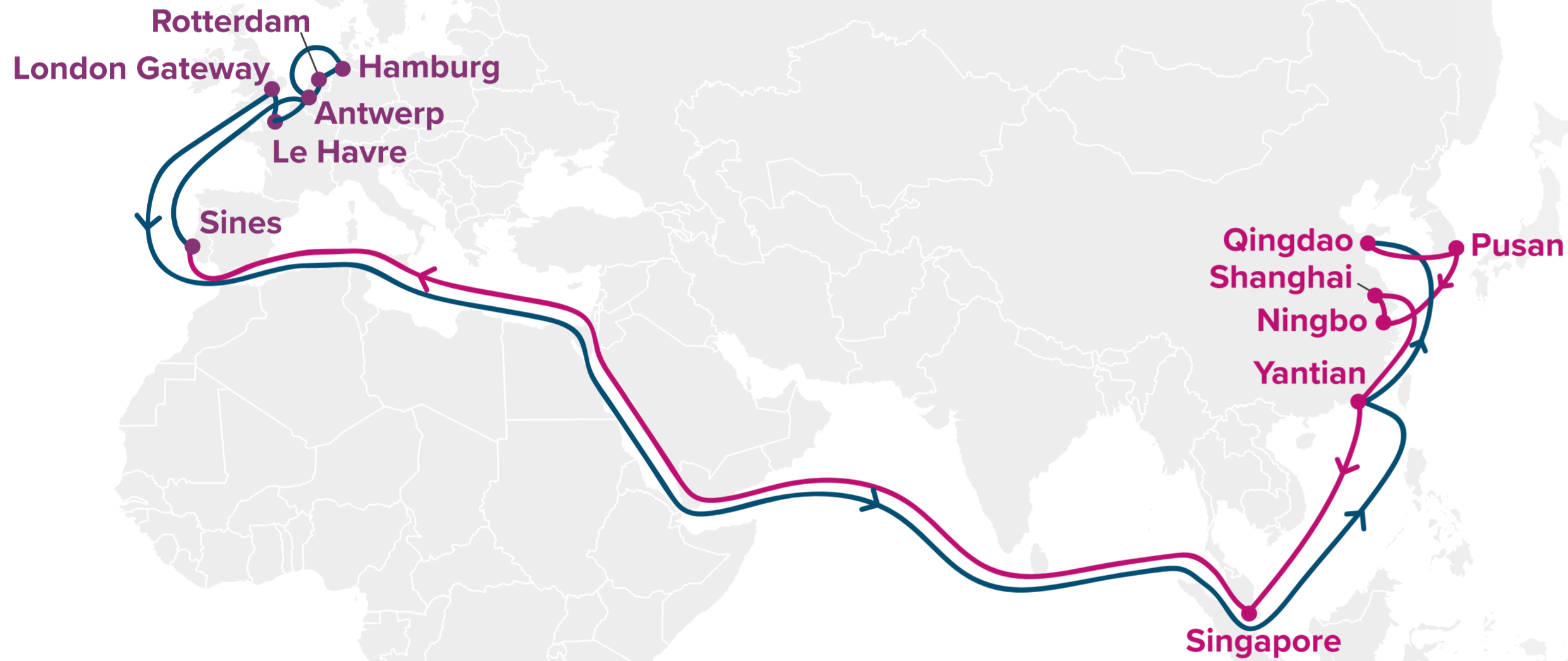
Port Rotation

(Terminals are subject to change)

ORIGIN	CODE	ETA	ETD	TERMINAL
SHANGHAI	SHA	TBD	TBD	TO BE DETERMINED (TBD)
NINGBO	NGB	-	-	-
KAOHSIUNG	KHH	-	-	-
YANTIAN	YTN	-	-	-
CAI MEP	CMP	-	-	-
SINGAPORE	SIN	-	-	-
DAMIETTA	DAM	-	-	-
ROTTERDAM	RTM	-	-	-
HAMBURG	HAM	-	-	-
LE HAVRE	LEH	-	-	-
ALGECIRAS	ALG	-	-	-
SINGAPORE	SIN	-	-	-
KAOHSIUNG	KHH	-	-	-
SHANGHAI	SHA	-	-	-

Transit Time

W/B	DAM	RTM	HAM	LEH	E/B	SIN	KHH	SHA	NGB	YTN
SHA	30	39	44	49	RTM	38	44	47	49	54
NGB	27	36	41	46	HAM	34	40	43	45	50
KHH	25	34	39	44	LEH	29	35	38	40	45
YTN	23	32	37	42	ALG	24	30	33	35	40
CMP	18	27	32	37						
SIN	15	24	29	34						



Key Service Strength

- Unique service with direct call to Portugal, covering East Asia ports as well as Singapore
- Express service to Antwerp
- Express service from UK to China/South Korea

Port Rotation

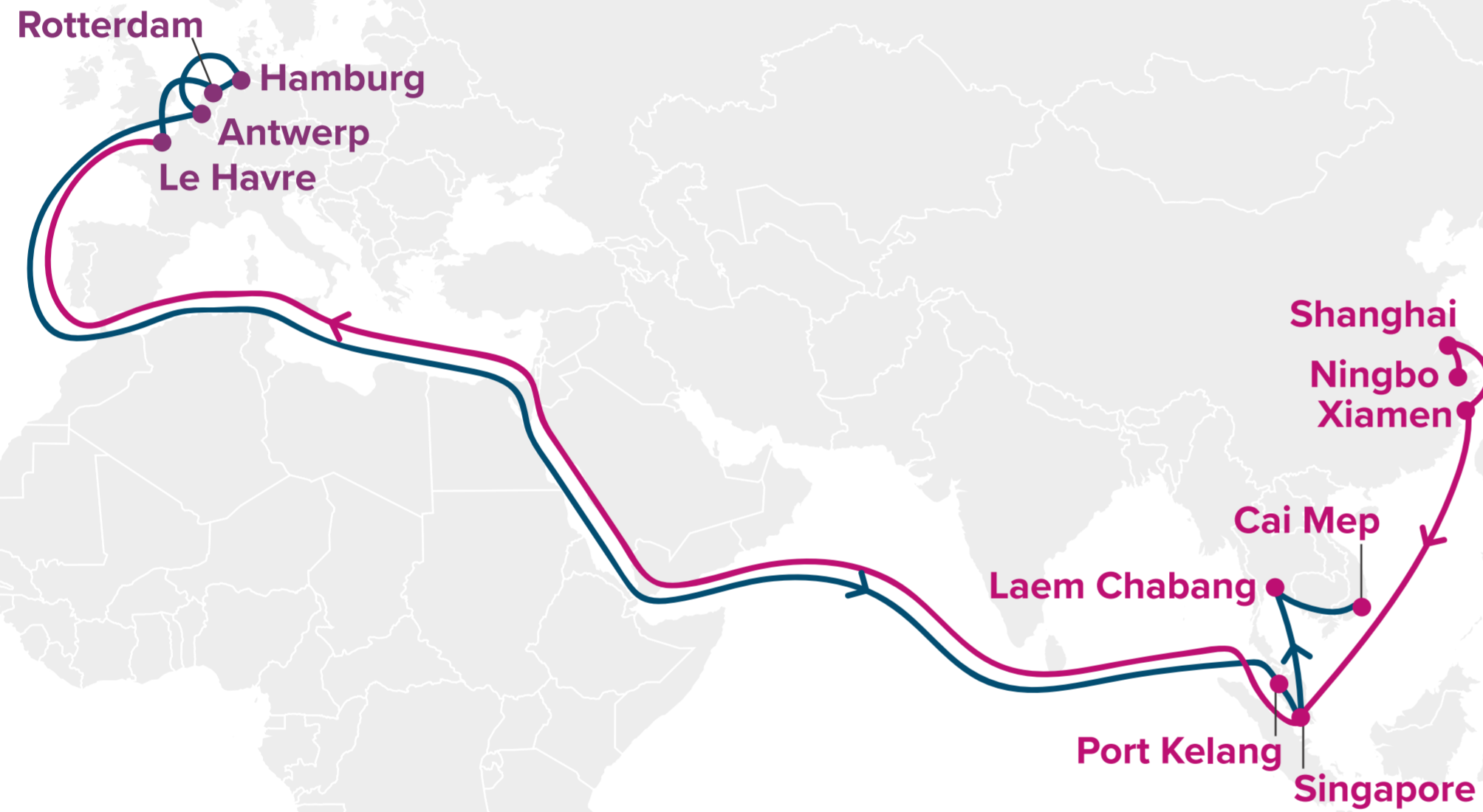
(Terminals are subject to change)

ORIGIN	CODE	ETA	ETD	TERMINAL
QINGDAO	TAO	TBD	TBD	TO BE DETERMINED (TBD)
PUSAN	PUS	-	-	-
NINGBO	NGB	-	-	-
SHANGHAI	SHA	-	-	-
YANTIAN	YTN	-	-	-
SINGAPORE	SIN	-	-	-
SINES	SIE	-	-	-
ANTWERP	ANR	-	-	-
HAMBURG	HAM	-	-	-
ROTTERDAM	RTM	-	-	-
ANTWERP	ANR	-	-	-
LE HAVRE	LEH	-	-	-
LONDON GATEWAY	LGP	-	-	-
YANTIAN	YTN	-	-	-
QINGDAO	TAO	-	-	-

Transit Time

W/B	SIE	ANR	HAM	RTM	LEH	LGP	E/B	YTN	TAO	PUS	NGB	SHA
TAO	38	43	47	52	57	59	SIE	58	63	66	70	73
PUS	35	40	44	49	54	56	HAM	47	52	55	59	62
NGB	31	36	40	45	51	52	RTM	44	48	52	55	59
SHA	28	33	37	42	47	49	ANR	41	46	49	53	56
YTN	24	29	33	38	43	45	LEH	39	44	47	51	54
SIN	19	23	28	32	38	40	LGP	37	42	45	49	52





Key Service Strength

- Express China service to Le Havre
- Comprehensive coverage of ports across Northern Europe
- Direct access to Port Kelang and Southeast Asia major ports

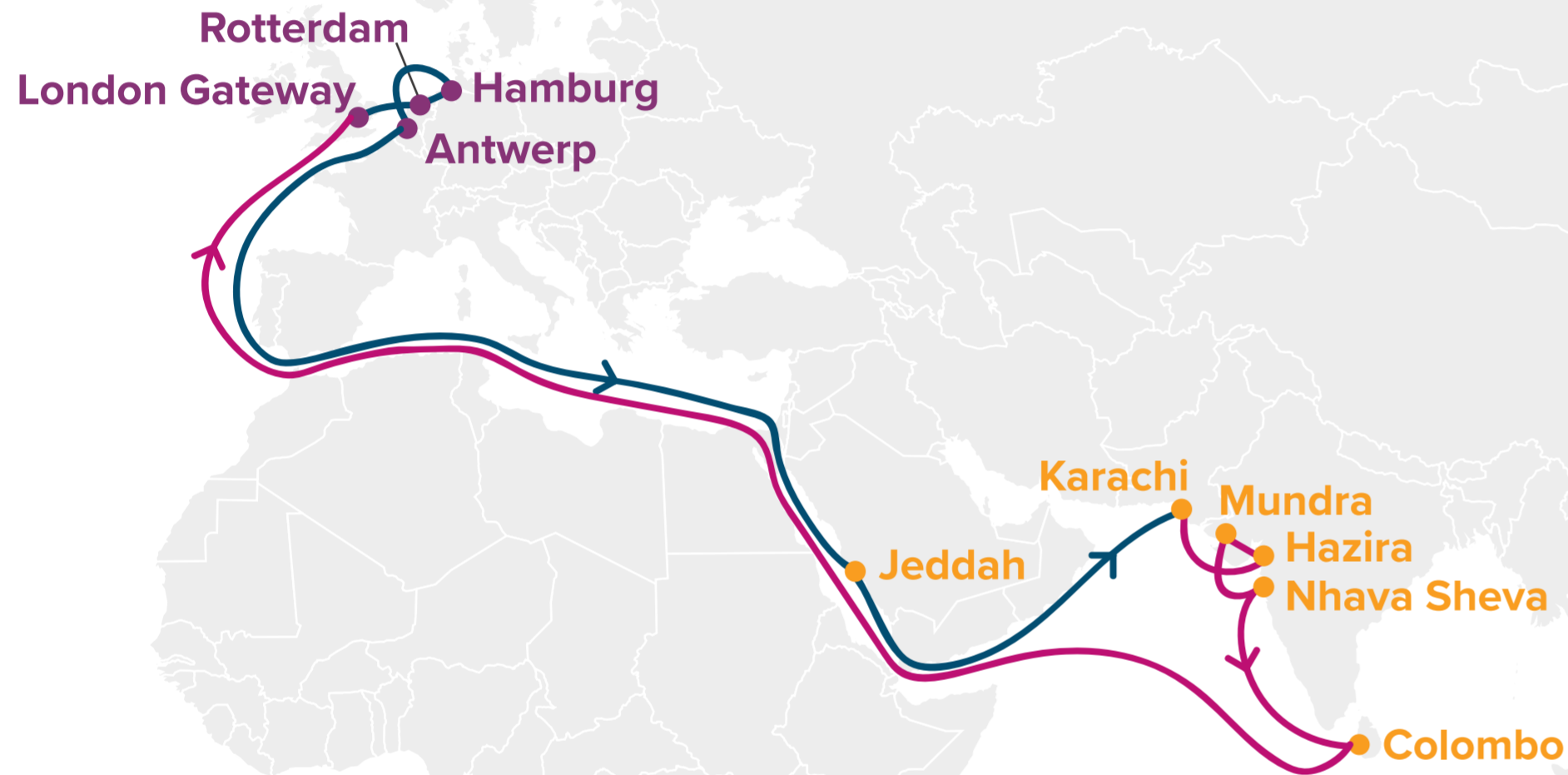
Port Rotation

(Terminals are subject to change)

ORIGIN	CODE	ETA	ETD	TERMINAL
NINGBO	NGB	TBD	TBD	TO BE DETERMINED (TBD)
SHANGHAI	SHA	-	-	-
XIAMEN	XMN	-	-	-
SINGAPORE	SIN	-	-	-
LE HAVRE	LEH	-	-	-
ROTTERDAM	RTM	-	-	-
HAMBURG	HAM	-	-	-
ANTWERP	ANR	-	-	-
PORT KELANG	PKG	-	-	-
SINGAPORE	SIN	-	-	-
LAEM CHABANG	LCH	-	-	-
CAI MEP	CMP	-	-	-

Transit Time

W/B	LEH	RTM	HAM	ANR	E/B	PKG	SIN	LCH	CMP
NGB	34	38	47	50	LEH	35	37	41	44
SHA	33	36	46	48	RTM	32	34	38	41
XMN	30	33	43	45	HAM	24	26	29	32
SIN	24	27	37	39	ANR	20	22	26	29



Key Service Strength

- Comprehensive coverage connecting West India, Sri Lanka, Pakistan to North Europe
- The transshipment service via Colombo would serve your shipment needs from the East India and Bangladesh

Port Rotation

(Terminals are subject to change)

ORIGIN	CODE	ETA	ETD	TERMINAL
KARACHI	KHI	TBD	TBD	TO BE DETERMINED (TBD)
HAZIRA	HZA	-	-	-
MUNDRA	MUN	-	-	-
NHAVA SHEVA	NSA	-	-	-
COLOMBO	CMB	-	-	-
LONDON GATEWAY	LGP	-	-	-
ROTTERDAM	RTM	-	-	-
HAMBURG	HAM	-	-	-
ANTWERP	ANR	-	-	-
JEDDAH	JED	-	-	-
KARACHI	KHI	-	-	-

Transit Time

W/B	LGP	RTM	HAM	ANR	E/B	JED	KHI	HZA	MUN	NSA	CMB
KHI	32	34	37	41	LGP	22	30	32	34	37	41
HZA	29	31	34	38	RTM	19	27	29	31	34	38
MUN	26	28	31	35	HAM	16	24	26	28	31	35
NSA	23	25	28	32	ANR	14	22	24	26	29	33
CMB	20	22	25	29							



Asia - Mediterranean Service (via Suez)

MD1

- Ningbo
- Shanghai
- Shekou
- Singapore
- Piraeus
- Istanbul
- Izmit
- Mersin
- Damietta
- Jeddah
- Singapore
- Kaohsiung
- Ningbo

MS2

- Pusan
- Shanghai
- Ningbo
- Kaohsiung
- Shekou
- Singapore
- Damietta
- Barcelona
- Valencia
- Fos
- Genoa
- Piraeus
- Singapore
- Laem Chabang
- Cai Mep
- Shanghai

MD3

- Xingang
- Dalian
- Pusan
- Ningbo
- Shanghai
- Singapore
- Yarimca
- Istanbul
- Tekirdag
- Piraeus
- Singapore
- Xiamen
- Xingang

MD4

- Shanghai
- Ningbo
- Yantian
- Singapore
- Gioia Tauro
- Genoa
- La Spezia
- Fos
- Valencia
- Malaga
- Yantian
- Shanghai

MD5

- Barcelona
- Singapore
- Shanghai

IOM

- Nhava Sheva
- Karachi
- Mundra
- Jeddah
- Piraeus
- Genoa
- Barcelona
- Valencia
- Algeciras
- Piraeus
- Jeddah
- Karachi
- Mundra
- Nhava Sheva

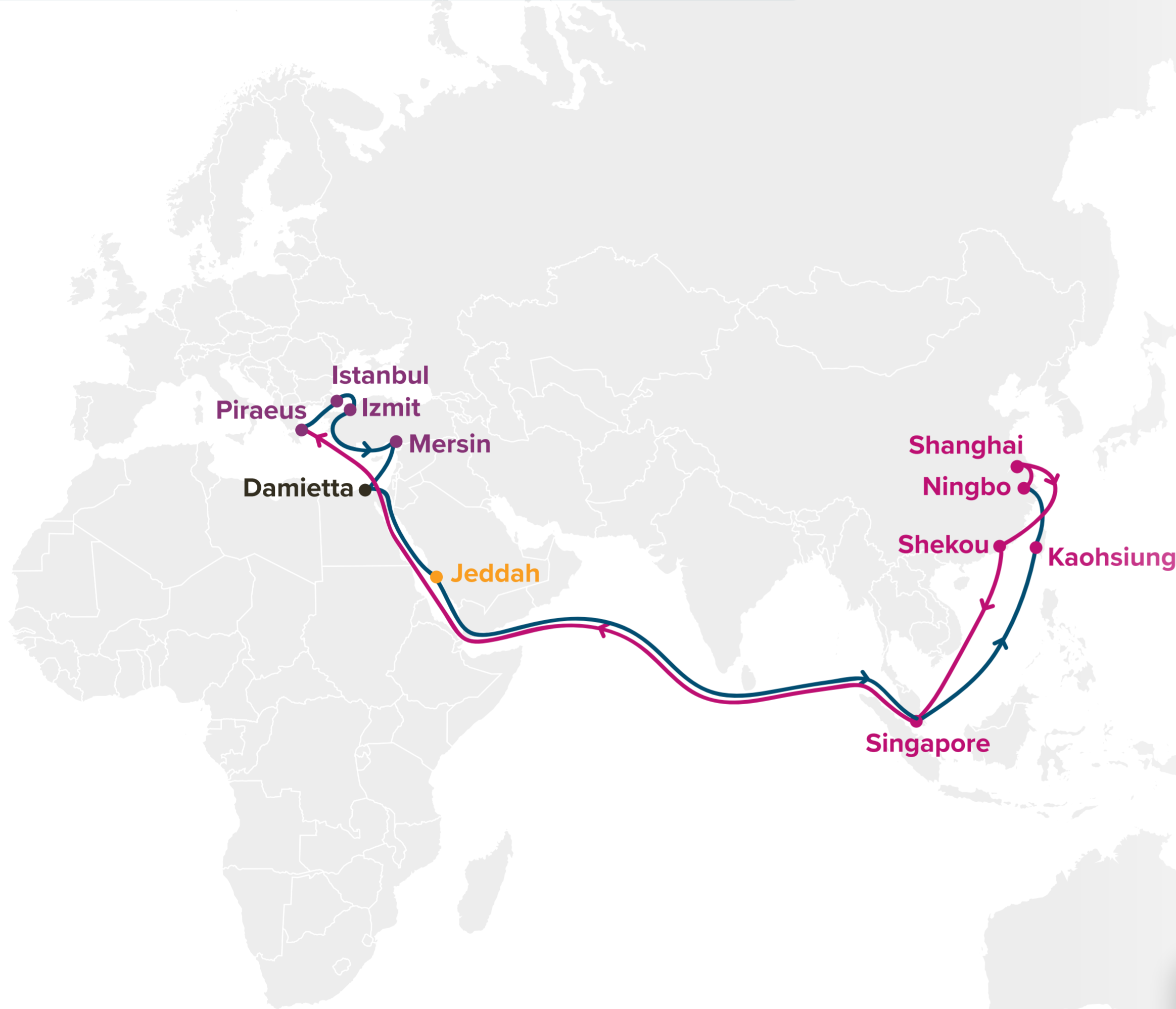
MD1: Mediterranean 1
MS2: Mediterranean Pacific South 2

MD3: Mediterranean 3
MD4: Mediterranean 4

MD5: Mediterranean 5
IOM: Indian Ocean Mediterranean

6 choices of services that provide extensive coverage of key ports to meet your direct connection needs across Asia and the Mediterranean.





Key Service Strength

- ▣ Direct service that offers thorough coverage of Eastern Mediterranean ports
- ▣ Convenient connection to the Middle East via Jeddah
- ▣ Direct service from Eastern Mediterranean and Egypt to Singapore / China

Port Rotation

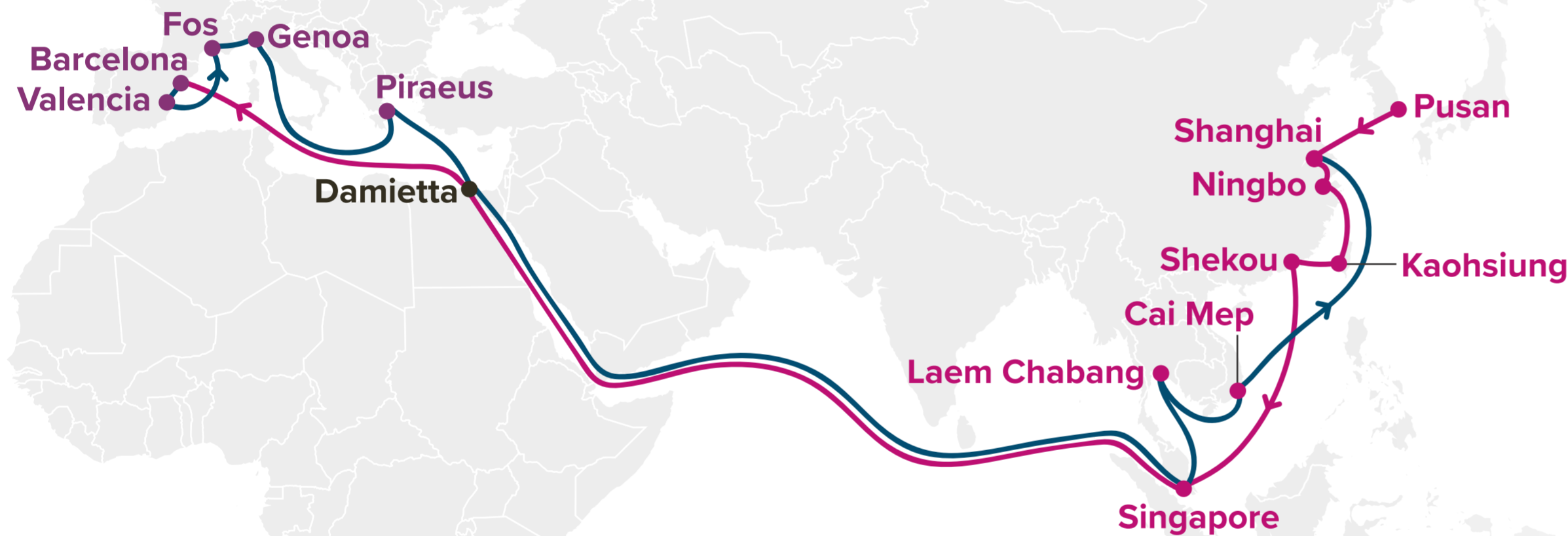
(Terminals are subject to change)

ORIGIN	CODE	ETA	ETD	TERMINAL
NINGBO	NGB	TBD	TBD	TO BE DETERMINED (TBD)
SHANGHAI	SHA	-	-	-
SHEKOU	SHK	-	-	-
SINGAPORE	SIN	-	-	-
PIRAEUS	PIR	-	-	-
ISTANBUL	IST	-	-	-
IZMIT	IZT	-	-	-
MERSIN	MER	-	-	-
DAMIETTA	DAM	-	-	-
JEDDAH	JED	-	-	-
SINGAPORE	SIN	-	-	-
KAOHSIUNG	KHH	-	-	-
NINGBO	NGB	-	-	-

Transit Time

W/B	PIR	IST	IZT	MER	E/B	JED	SIN	KHH	NGB	SHA	SHK
NGB	29	32	34	38	IST	10	24	32	34	37	41
SHA	27	30	32	36	IZT	9	23	31	33	36	40
SHK	24	27	29	33	MER	5	19	27	29	32	36
SIN	18	21	23	27	DAM	3	17	25	27	30	34





EASTBOUND →
WESTBOUND ←

Key Service Strength

- Direct service that offers thorough coverage of West Mediterranean ports
- Offers Southeast Asian coverage on the East Bound leg

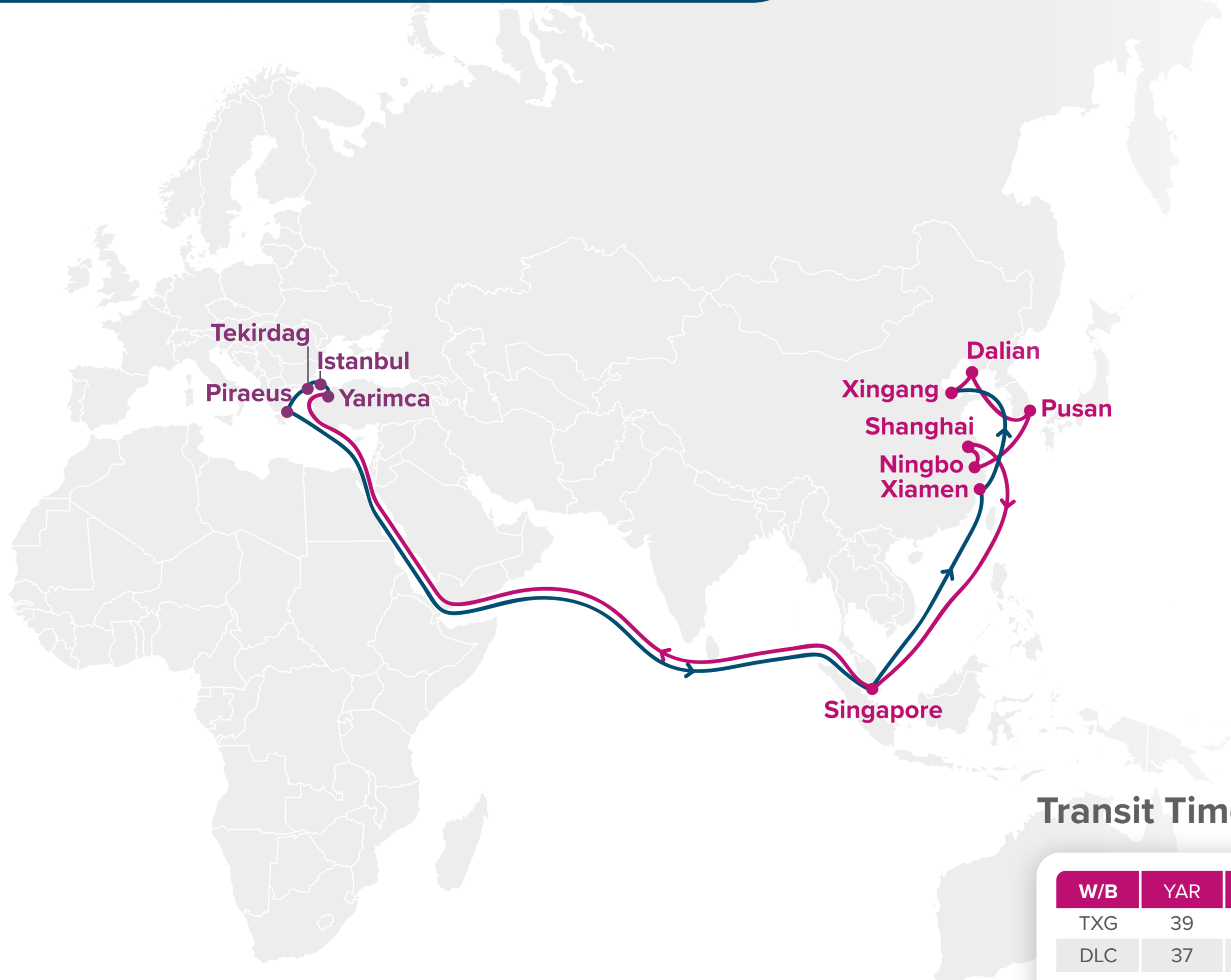
Port Rotation

(Terminals are subject to change)

ORIGIN	CODE	ETA	ETD	TERMINAL
PUSAN	PUS	TBD	TBD	TO BE DETERMINED (TBD)
SHANGHAI	SHA	-	-	-
NINGBO	NGB	-	-	-
KAOHSIUNG	KHH	-	-	-
SHEKOU	SHK	-	-	-
SINGAPORE	SIN	-	-	-
DAMIETTA	DAM	-	-	-
BARCELONA	BCN	-	-	-
VALENCIA	VLC	-	-	-
FOS	FOS	-	-	-
GENOA	GOA	-	-	-
PIRAEUS	PIR	-	-	-
SINGAPORE	SIN	-	-	-
LAEM CHABANG	LCH	-	-	-
CAI MEP	CMP	-	-	-
SHANGHAI	SHA	-	-	-

Transit Time

W/B	DAM	BCN	VLC	FOS	GOA	E/B	SIN	LCH	CMP	SHA
PUS	32	37	40	44	47	BCN	37	42	46	52
SHA	29	34	37	41	44	VLC	33	38	42	48
NGB	26	31	34	38	41	FOS	30	35	39	45
KHH	23	28	31	35	38	GOA	27	32	36	42
SHK	20	25	28	32	35	PIR	23	28	32	38
SIN	15	20	23	27	30					



Key Service Strength

- Extensive coverage of China ports with fast transit to Turkey
- Direct access from Eastern Mediterranean to China / South Korea

Port Rotation

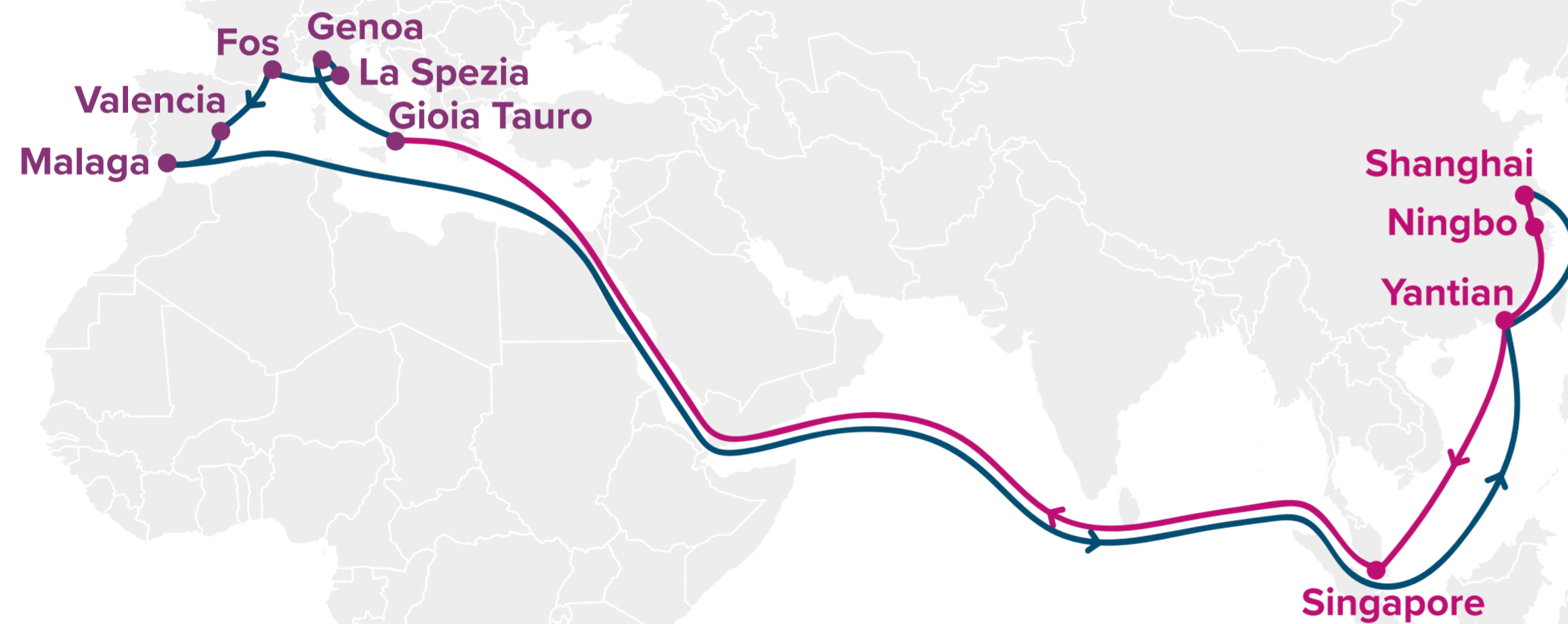
(Terminals are subject to change)

ORIGIN	CODE	ETA	ETD	TERMINAL
XINGANG	TXG	TBD	TBD	TO BE DETERMINED (TBD)
DALIAN	DLC	-	-	-
PUSAN	PUS	-	-	-
NINGBO	NGB	-	-	-
SHANGHAI	SHA	-	-	-
SINGAPORE	SIN	-	-	-
YARIMCA	YAR	-	-	-
ISTANBUL	IST	-	-	-
TEKIRDAG	TEK	-	-	-
PIRAEUS	PIR	-	-	-
SINGAPORE	SIN	-	-	-
XIAMEN	XMN	-	-	-
XINGANG	TXG	-	-	-

Transit Time

W/B	YAR	IST	TEK	PIR	E/B	SIN	XMN	TXG	DLC	PUS	NGB	SHA
TXG	39	41	43	46	YAR	34	41	47	50	54	56	58
DLC	37	39	41	44	IST	32	39	45	48	52	54	56
PUS	33	35	37	40	TEK	30	36	43	46	50	52	54
NGB	30	33	35	38	PIR	28	34	41	44	48	50	52
SHA	29	31	33	36								
SIN	22	24	26	29								





EASTBOUND →
WESTBOUND ←

Key Service Strength

- Express service to Italy and Western Mediterranean ports with a focus on major China ports

Port Rotation

(Terminals are subject to change)

ORIGIN	CODE	ETA	ETD	TERMINAL
SHANGHAI	SHA	TBD	TBD	TO BE DETERMINED (TBD)
NINGBO	NGB	-	-	-
YANTIAN	YTN	-	-	-
SINGAPORE	SIN	-	-	-
GIOIA TAURO	GIT	-	-	-
GENOA	GOA	-	-	-
LA SPEZIA	SPE	-	-	-
FOS	FOS	-	-	-
VALENCIA	VLC	-	-	-
MALAGA	AGP	-	-	-
YANTIAN	YTN	-	-	-
SHANGHAI	SHA	-	-	-

Transit Time

W/B	GIT	GOA	SPE	FOS	VLC	AGP	E/B	YTN	SHA	NGB
SHA	30	36	38	40	45	47	GIT	60	63	66
NGB	27	33	36	38	42	45	GOA	55	58	61
YTN	24	30	33	35	39	42	SPE	53	56	59
SIN	18	24	26	29	33	35	FOS	50	53	55
							VLC	47	50	52
							AGP	45	47	50

Barcelona

Shanghai

Singapore

Key Service Strength

Direct access from Barcelona to Singapore and Shanghai

Port Rotation

(Terminals are subject to change)

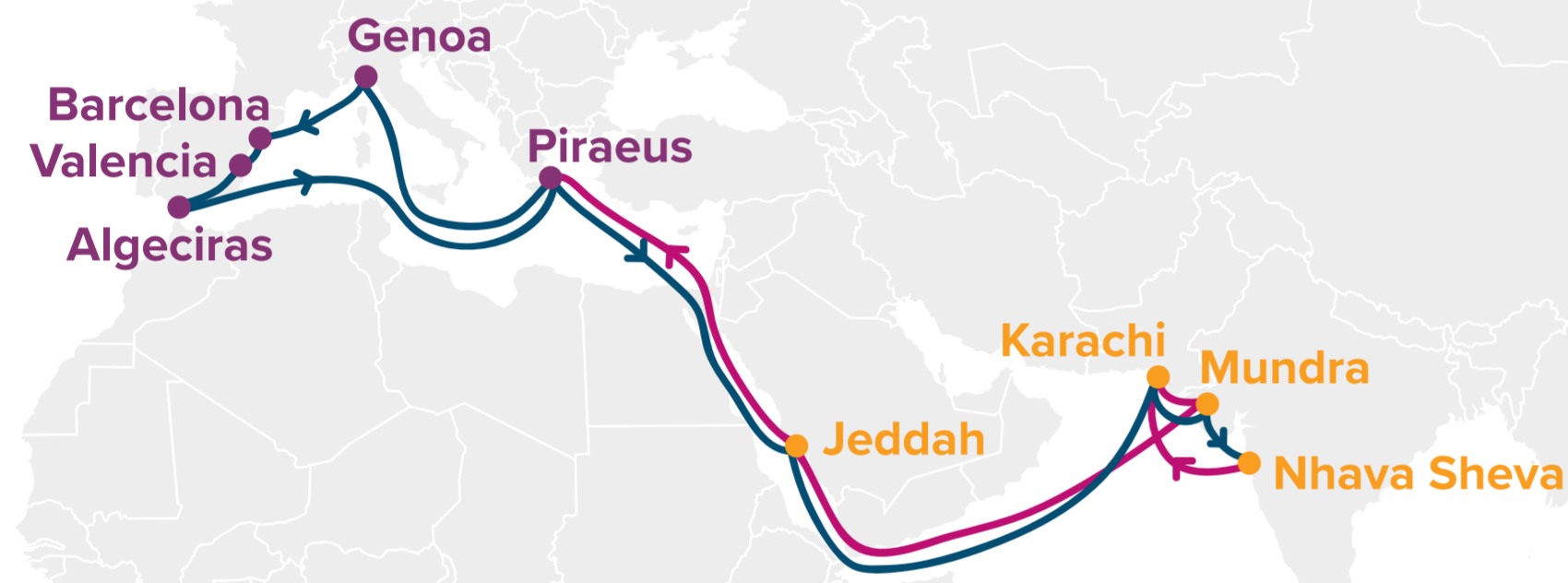
ORIGIN	CODE	ETA	ETD	TERMINAL
BARCELONA	BCN	TBD	TBD	TO BE DETERMINED (TBD)
SINGAPORE	SIN	-	-	-
SHANGHAI	SHA	-	-	-

TURNAROUND DAYS: TBD

Transit Time

E/B	SIN	SHA
BCN	21	29

EASTBOUND →



EASTBOUND →
WESTBOUND ←

Key Service Strength

- Dedicated service connection West India, Pakistan with West, East Mediterranean ports directly

Port Rotation

(Terminals are subject to change)

ORIGIN	CODE	ETA	ETD	TERMINAL
NHAVA SHEVA	NSA	TBD	TBD	TO BE DETERMINED (TBD)
KARACHI	KHI	-	-	-
MUNDRA	MUN	-	-	-
JEDDAH	JED	-	-	-
PIRAEUS	PIR	-	-	-
GENOA	GOA	-	-	-
BARCELONA	BCN	-	-	-
VALENCIA	VLC	-	-	-
ALGECIRAS	ALG	-	-	-
PIRAEUS	PIR	-	-	-
JEDDAH	JED	-	-	-
KARACHI	KHI	-	-	-
MUNDRA	MUN	-	-	-
NHAVA SHEVA	NSA	-	-	-

Transit Time

W/B	PIR	GOA	BCN	VLC	ALG	E/B	JED	KHI	MUN	NSA
NSA	15	18	21	23	27	GOA	18	25	27	29
KHI	13	16	19	21	25	BCN	16	23	25	27
MUN	11	14	17	19	23	VLC	13	20	22	24
JED	5	8	11	13	17	ALG	10	17	19	21
						PIR	5	12	14	16

FP1	MS2	PS3	PS4	PS5	PS6	AP1	AHX
• Singapore	• Singapore	• Nhava Sheva	• Xiamen	• Qingdao	• Shanghai	• Haiphong	• Pusan
• Kobe	• Laem Chabang	• Pipavav	• Yantian	• Ningbo	• Ningbo	• Cai Mep	• Yokohama
• Nagoya	• Cai Mep	• Colombo	• Kaohsiung	• LA/LB	• Kwangyang	• Shekou	• Honolulu
• Tokyo	• Shanghai	• Port Kelang	• Keelung	• Oakland	• Pusan	• Xiamen	• Pusan
• LA/LB	• LA/LB	• Singapore	• LA/LB	• Kobe	• LA/LB	• Taipei	
• Oakland	• Oakland	• Cai Mep	• Oakland	• Qingdao	• Oakland	• Ningbo	
• Tokyo	• Pusan	• Haiphong	• Keelung	• Pusan	• Pusan	• Shanghai	
• Shimizu	• Shanghai	• Yantian	• Kaohsiung	• Kwangyang	• Incheon	• LA/LB	
• Kobe	• Ningbo	• LA/LB	• Xiamen	• Shanghai	• Shanghai	• Oakland	
• Nagoya	• Kaohsiung	• Oakland				• Shekou	
• Tokyo	• Shekou	• Tokyo				• Haiphong	
• Singapore	• Singapore	• Pusan					
		• Shanghai					
		• Ningbo					
		• Shekou					
		• Singapore					
		• Port Kelang					
		• Nhava Sheva					

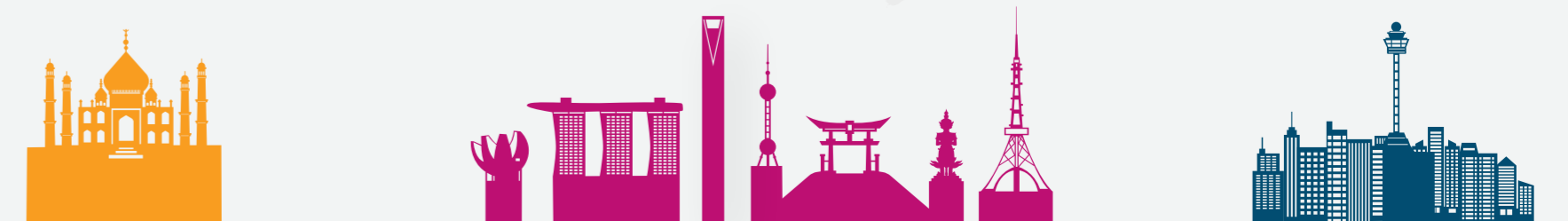
FP1: Far East Pacific South 1
MS2: Mediterranean Pacific South 2

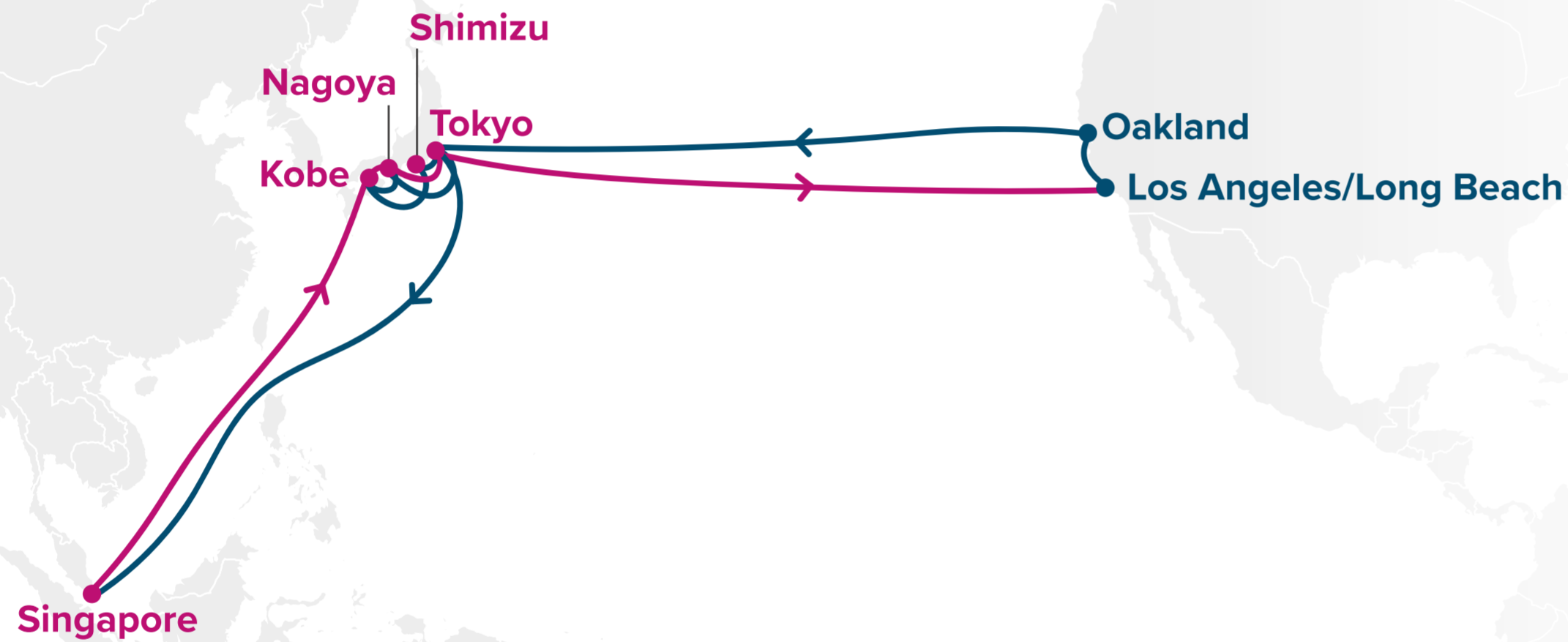
PS3: Pacific South 3
PS4: Pacific South 4

PS5: Pacific South 5
PS6: Pacific South 6

AP1: Asia Pacific 1
AHX: Asia Hawaii Express

8 choices of services that provide extensive coverage of key ports to meet your direct connection needs across Asia and Pacific Southwest.





Key Service Strength

- Fast and dedicated Japan direct service for the US West Coast
- Covering major Japan ports: Tokyo, Kobe, Nagoya, and Shimizu
- An unparalleled direct service between Japan and the US West Coast - one of the best of its class

Port Rotation

(Terminals are subject to change)

ORIGIN	CODE	ETA	ETD	TERMINAL
SINGAPORE	SIN	TBD	TBD	TO BE DETERMINED (TBD)
KOBE	UKB	-	-	-
NAGOYA	NGO	-	-	-
TOKYO	TYO	-	-	-
LA/LB	LAX/LGB	-	-	-
OAKLAND	OAK	-	-	-
TOKYO	TYO	-	-	-
SHIMIZU	SMZ	-	-	-
KOBE	UKB	-	-	-
NAGOYA	NGO	-	-	-
TOKYO	TYO	-	-	-
SINGAPORE	SIN	-	-	-

Transit Time

E/B	LAX/LGB	OAK	W/B	TYO	SMZ	UKB	NGO	SIN
SIN	27	33	LAX/LGB	14	15	16	18	28
UKB	17	23	OAK	12	13	14	16	26
NGO	15	21						
TYO	12	18						

Key Service Strength

- Express and direct service focusing on key ports in Asia
- An additional service choice to cater to Cai Mep and Laem Chabang

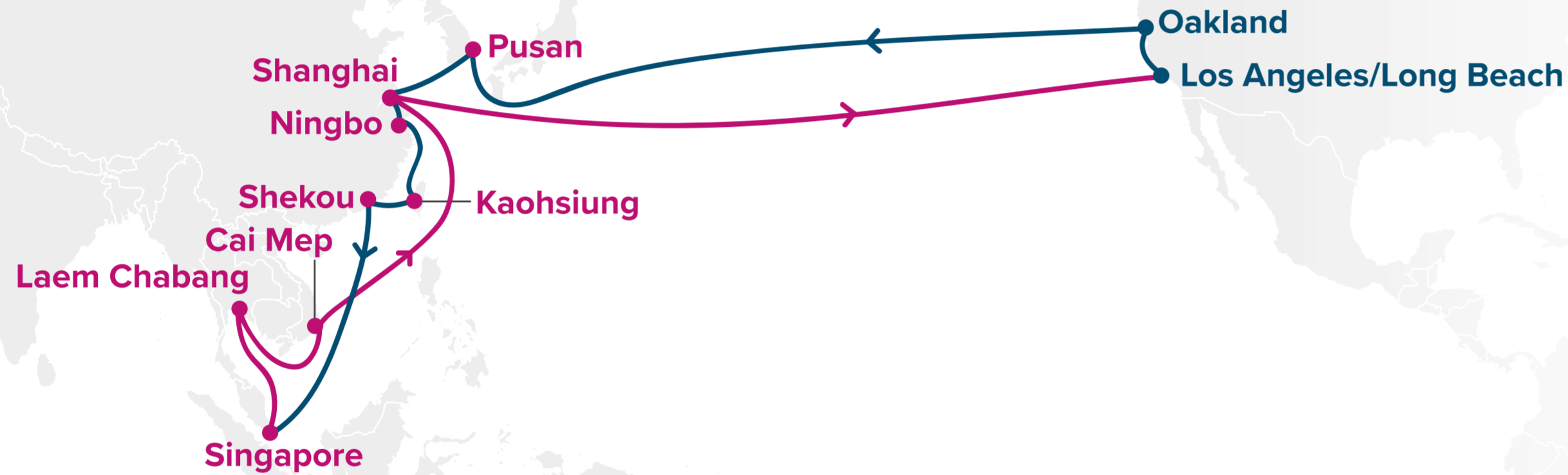
Port Rotation

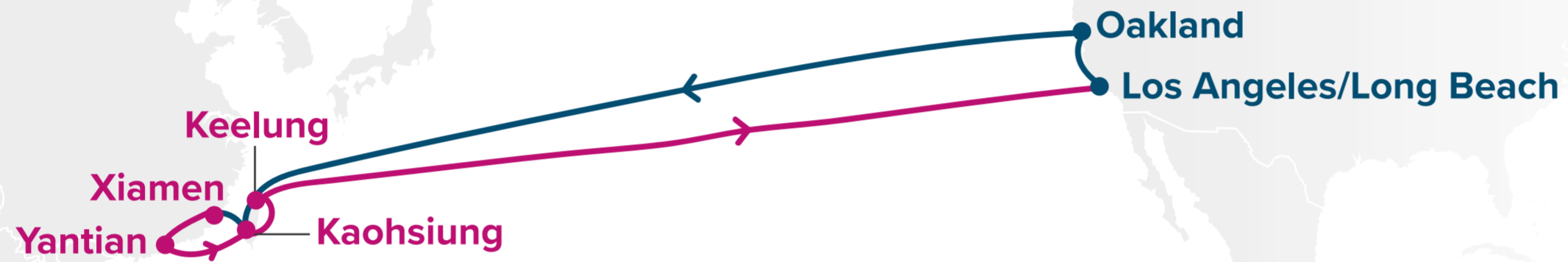
(Terminals are subject to change)

ORIGIN	CODE	ETA	ETD	TERMINAL
SINGAPORE	SIN	TBD	TBD	TO BE DETERMINED (TBD)
LAEM CHABANG	LCH	-	-	-
CAI MEP	CMP	-	-	-
SHANGHAI	SHA	-	-	-
LA/LB	LAX/LGB	-	-	-
OAKLAND	OAK	-	-	-
PUSAN	PUS	-	-	-
SHANGHAI	SHA	-	-	-
NINGBO	NGB	-	-	-
KAOHSIUNG	KHH	-	-	-
SHEKOU	SHK	-	-	-
SINGAPORE	SIN	-	-	-

Transit Time

E/B	LAX/LGB	OAK	W/B	PUS	SHA	NGB	KHH	SHK	SIN
SIN	30	38	LAX/LGB	24	27	30	34	37	42
LCH	25	33	OAK	20	23	26	30	33	38
CMP	22	30							
SHA	14	22							





Key Service Strength

- Express, direct service for South China
- Competitive transit time from Kaohsiung and Keelung

Port Rotation

(Terminals are subject to change)

ORIGIN	CODE	ETA	ETD	TERMINAL
XIAMEN	XMN	TBD	TBD	TO BE DETERMINED (TBD)
YANTIAN	YTN	-	-	-
KAOHSIUNG	KHH	-	-	-
KEELUNG	KEL	-	-	-
LA/LB	LAX/LGB	-	-	-
OAKLAND	OAK	-	-	-
KEELUNG	KEL	-	-	-
KAOHSIUNG	KHH	-	-	-
XIAMEN	XMN	-	-	-

Transit Time

E/B	LAX/LGB	OAK	W/B	KEL	KHH	XMN	YTN
XMN	20	26	LAX/LGB	20	22	24	26
YTN	18	24	OAK	16	18	20	22
KHH	16	22					
KEL	15	21					





Key Service Strength

- ▣ Dedicated and fast transit service from Central and North China ports to the US West Coast
- ▣ Added connectivity to fulfil the requirements for Kobe

Port Rotation

(Terminals are subject to change)

ORIGIN	CODE	ETA	ETD	TERMINAL
QINGDAO	TAO	TBD	TBD	TO BE DETERMINED (TBD)
NINGBO	NGB	-	-	-
LA/LB	LAX/LGB	-	-	-
OAKLAND	OAK	-	-	-
KOBE	UKB	-	-	-
QINGDAO	TAO	-	-	-

Transit Time

E/B	LAX/LGB	OAK	W/B	UKB	TAO	NGB
TAO	17	22	LAX/LGB	17	20	23
NGB	14	19	OAK	14	17	20



Key Service Strength

- ▣ Dedicated for South Korea and Central China
- ▣ Fast Transit serving the need for Kwangyang and Pusan

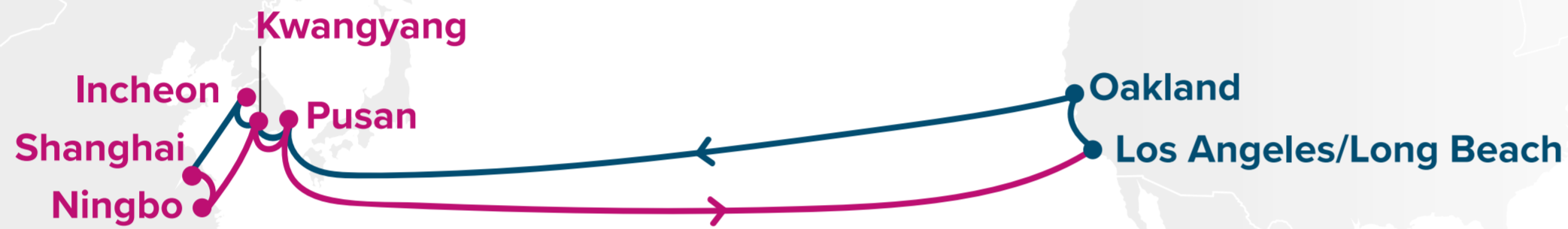
Port Rotation

(Terminals are subject to change)

ORIGIN	CODE	ETA	ETD	TERMINAL
SHANGHAI	SHA	TBD	TBD	TO BE DETERMINED (TBD)
NINGBO	NGB	-	-	-
KWANGYANG	KAN	-	-	-
PUSAN	PUS	-	-	-
LA/LB	LAX/LGB	-	-	-
OAKLAND	OAK	-	-	-
PUSAN	PUS	-	-	-
KWANGYANG	KAN	-	-	-
INCHEON	ICN	-	-	-
SHANGHAI	SHA	-	-	-

Transit Time

E/B	LAX/LGB	OAK	W/B	PUS	KAN	ICN	SHA	NGB
SHA	18	26	LAX/LGB	17	18	20	22	24
NGB	17	25	OAK	14	15	17	19	21
KAN	15	23						
PUS	12	20						



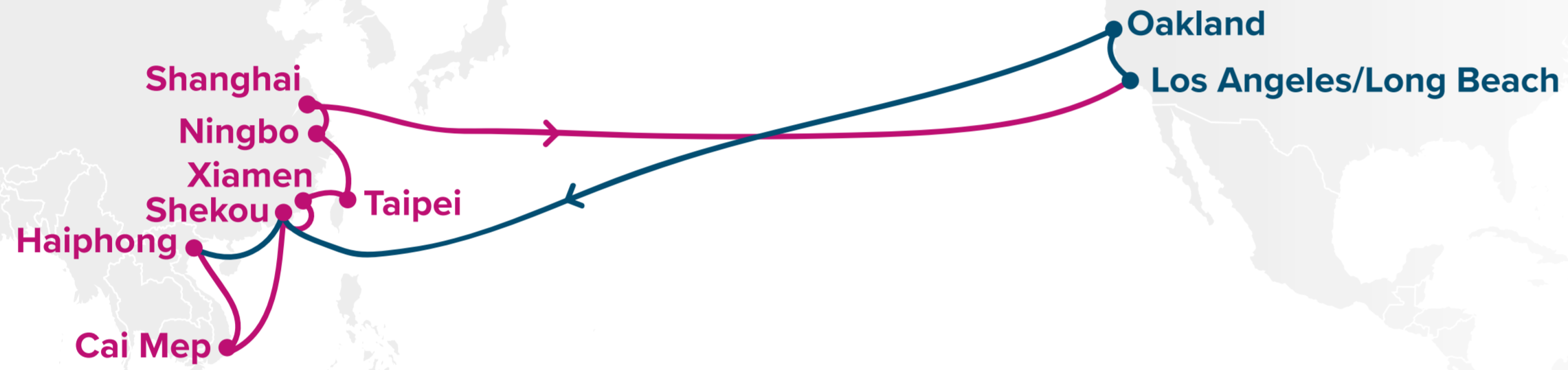
Key Service Strength

Wide coverage including ports from Taipei, Central and South China, and Vietnam (Haiphong and Cai Mep)

Port Rotation

(Terminals are subject to change)

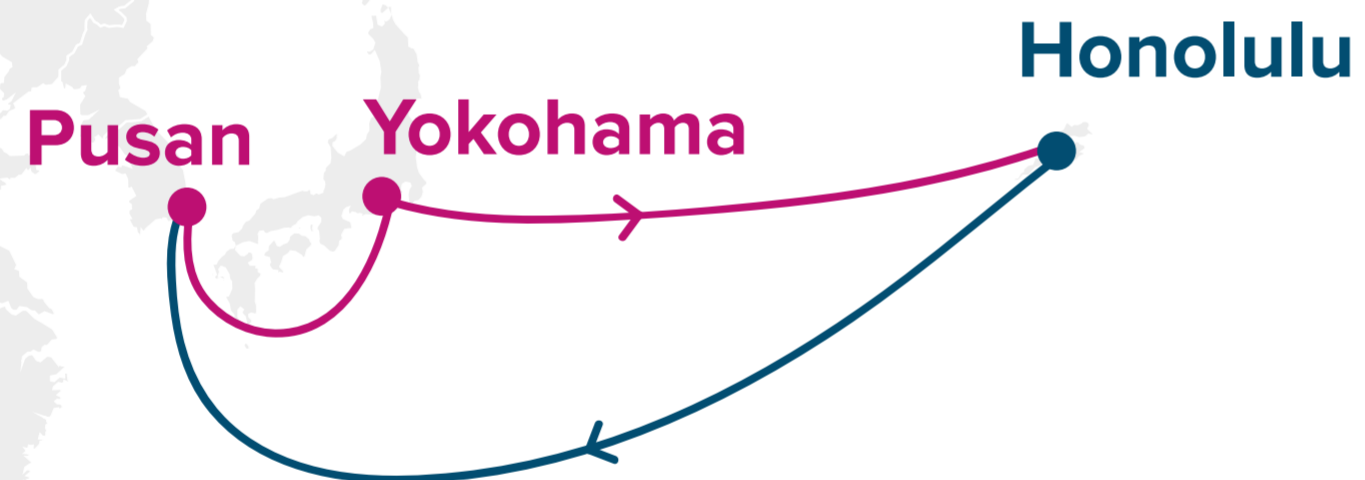
ORIGIN	CODE	ETA	ETD	TERMINAL
HAIPHONG	HPH	TBD	TBD	TO BE DETERMINED (TBD)
CAI MEP	CMP	-	-	-
SHEKOU	SHK	-	-	-
XIAMEN	XMN	-	-	-
TAIPEI	TPE	-	-	-
NINGBO	NGB	-	-	-
SHANGHAI	SHA	-	-	-
LA/LB	LAX/LGB	-	-	-
OAKLAND	OAK	-	-	-
SHEKOU	SHK	-	-	-
HAIPHONG	HPH	-	-	-



Transit Time

E/B	LAX/LGB	OAK	W/B	SHK	HPH	CMP	XMN	TPE	NGB	SHA
HPH	27	33	LAX/LGB	20	23	26	31	33	34	36
CMP	24	30	OAK	16	19	22	27	29	30	32
SHK	21	27								
XMN	19	25								
TPE	17	23								
NGB	16	22								
SHA	14	20								

EASTBOUND →
WESTBOUND ←



Key Service Strength

- A unique service to cater to the needs in Hawaii
- Wide Asian coverage with ONE's feeder network via Pusan & Yokohama

Port Rotation

(Terminals are subject to change)

ORIGIN	CODE	ETA	ETD	TERMINAL
PUSAN	PUS	TBD	TBD	TO BE DETERMINED (TBD)
YOKOHAMA	YOK	-	-	-
HONOLULU	HNL	-	-	-
PUSAN	PUS	-	-	-

Transit Time

E/B	HNL	W/B	PUS	YOK
PUS	16	HNL	23	25
YOK	13			



PN1

- Xiamen
- Kaohsiung
- Ningbo
- Nagoya
- Tokyo
- Tacoma
- Vancouver
- Tokyo
- Kobe
- Nagoya
- Xiamen

FP2

- Singapore
- Laem Chabang
- Cai Mep
- Haiphong
- Yantian
- Vancouver
- Tacoma
- Tokyo
- Kobe
- Shanghai
- Ningbo
- Yantian
- Singapore

PN3

- Qingdao
- Ningbo
- Shaghai
- Pusan
- Vancouver
- Tacoma
- Pusan
- Qingdao

PN1: Pacific North 1

FP2: Far East Pacific North 2

PN3: Pacific North 3

3 choices of services that provide extensive coverage of key ports to meet your direct connection needs across Asia and Pacific Northwest.



Key Service Strength

- Fast transit service with direct calls to Japan, Kaohsiung, and China

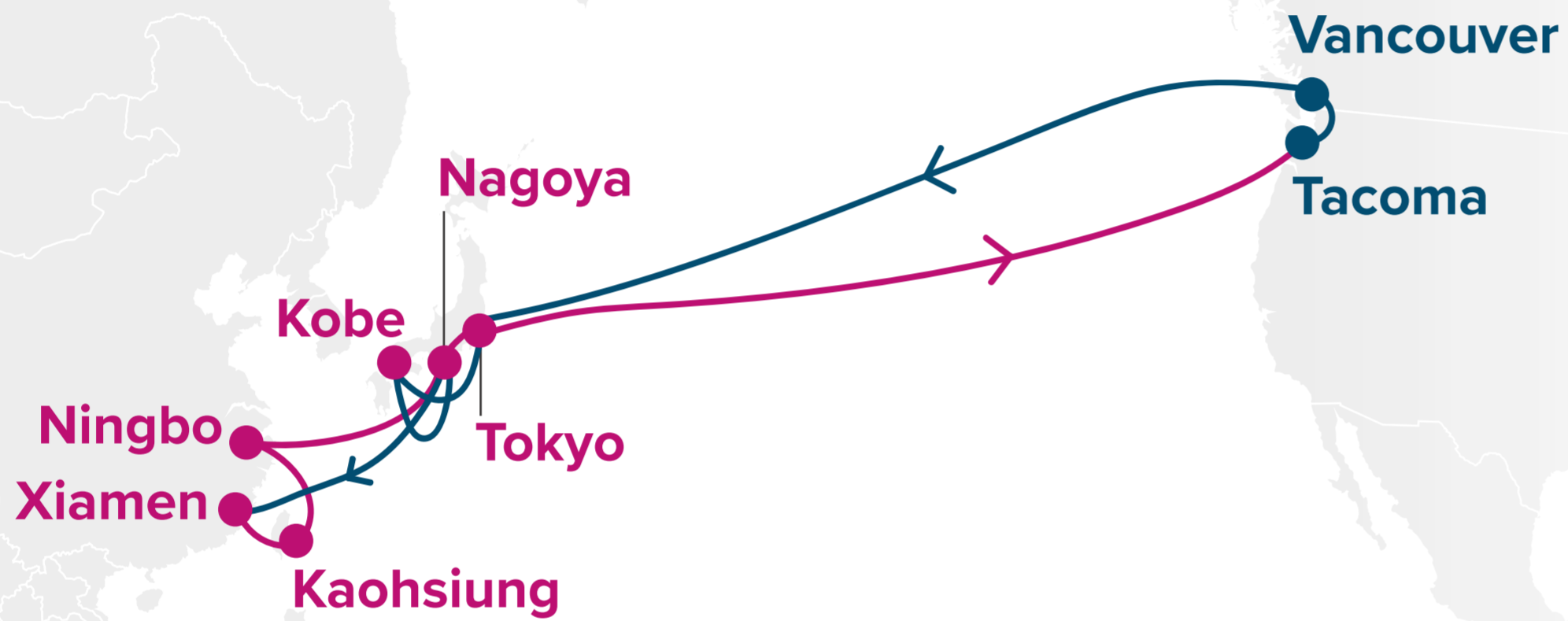
Port Rotation

(Terminals are subject to change)

ORIGIN	CODE	ETA	ETD	TERMINAL
XIAMEN	XMN	TBD	TBD	TO BE DETERMINED (TBD)
KAOHSIUNG	KHH	-	-	-
NINGBO	NGB	-	-	-
NAGOYA	NGO	-	-	-
TOKYO	TYO	-	-	-
TACOMA	TIW	-	-	-
VANCOUVER	VAN	-	-	-
TOKYO	TYO	-	-	-
KOBE	UKB	-	-	-
NAGOYA	NGO	-	-	-
XIAMEN	XMN	-	-	-

Transit Time

E/B	TIW	VAN	W/B	TYO	UKB	NGO	XMN	KHH	NGB
XMN	17	20	TIW	13	15	17	21	22	24
KHH	16	19	VAN	11	13	15	19	20	22
NGB	14	17							
NGO	11	14							
TYO	10	13							





Key Service Strength

- ☐ Comprehensive Southeast Asia port coverage with direct calls to Thailand and Vietnam
- ☐ Call Japan ports directly including Tokyo / Kobe (for reefer needs)

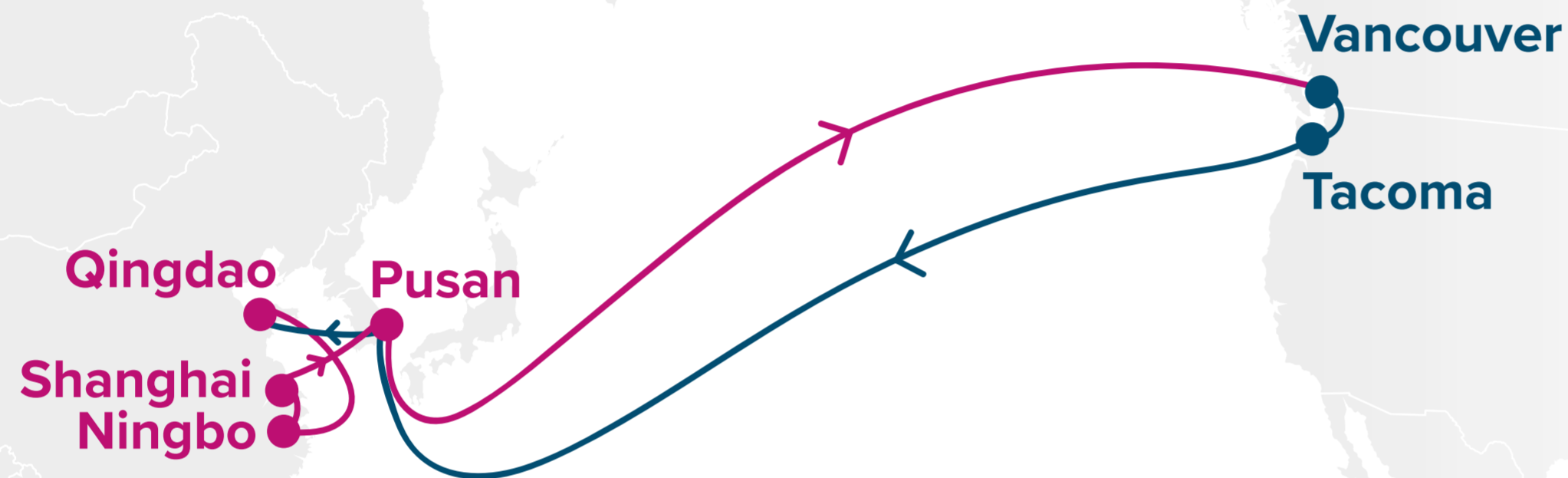
Port Rotation

(Terminals are subject to change)

ORIGIN	CODE	ETA	ETD	TERMINAL
SINGAPORE	SIN	TBD	TBD	TO BE DETERMINED (TBD)
LAEM CHABANG	LCH	-	-	-
CAI MEP	CMP	-	-	-
HAIPHONG	HPH	-	-	-
YANTIAN	YTN	-	-	-
VANCOUVER	VAN	-	-	-
TACOMA	TIW	-	-	-
TOKYO	TYO	-	-	-
KOBE	UKB	-	-	-
SHANGHAI	SHA	-	-	-
NINGBO	NGB	-	-	-
YANTIAN	YTN	-	-	-
SINGAPORE	SIN	-	-	-

Transit Time

E/B	VAN	TIW	W/B	TYO	UKB	SHA	NGB	YTN	SIN
SIN	29	35	VAN	18	20	24	26	30	35
LCH	25	31	TIW	15	17	21	23	27	32
CMP	21	27							
HPH	18	24							
YTN	14	20							



Key Service Strength

- Express service connecting North China and Vancouver
- Efficient hub via Pusan for wider coverage to other Asian outports

Port Rotation

(Terminals are subject to change)

ORIGIN	CODE	ETA	ETD	TERMINAL
QINGDAO	TAO	TBD	TBD	TO BE DETERMINED (TBD)
NINGBO	NGB	-	-	-
SHANGHAI	SHA	-	-	-
PUSAN	PUS	-	-	-
VANCOUVER	VAN	-	-	-
TACOMA	TIW	-	-	-
PUSAN	PUS	-	-	-
QINGDAO	TAO	-	-	-

Transit Time

E/B	VAN	TIW	W/B	PUS	TAO	NGB	SHA
TAO	19	24	VAN	20	25	28	29
NGB	16	21	TIW	15	20	23	24
SHA	14	19					
PUS	12	17					



Asia - East Coast North America Service via Suez

5 choices of services that provide extensive coverage of key ports to meet your direct connection needs across Asia and East Coast North America.



EC1: US East Coast 1
EC2: US East Coast 2

EC3: US East Coast 3
EC4: US East Coast 4

WIN: West India North America



Key Service Strength

- Choice of service for fast transit from North and Central China to the US East Coast
- Caters to the needs of the North Atlantic US East Coast ports: New York, Norfolk, and Savannah

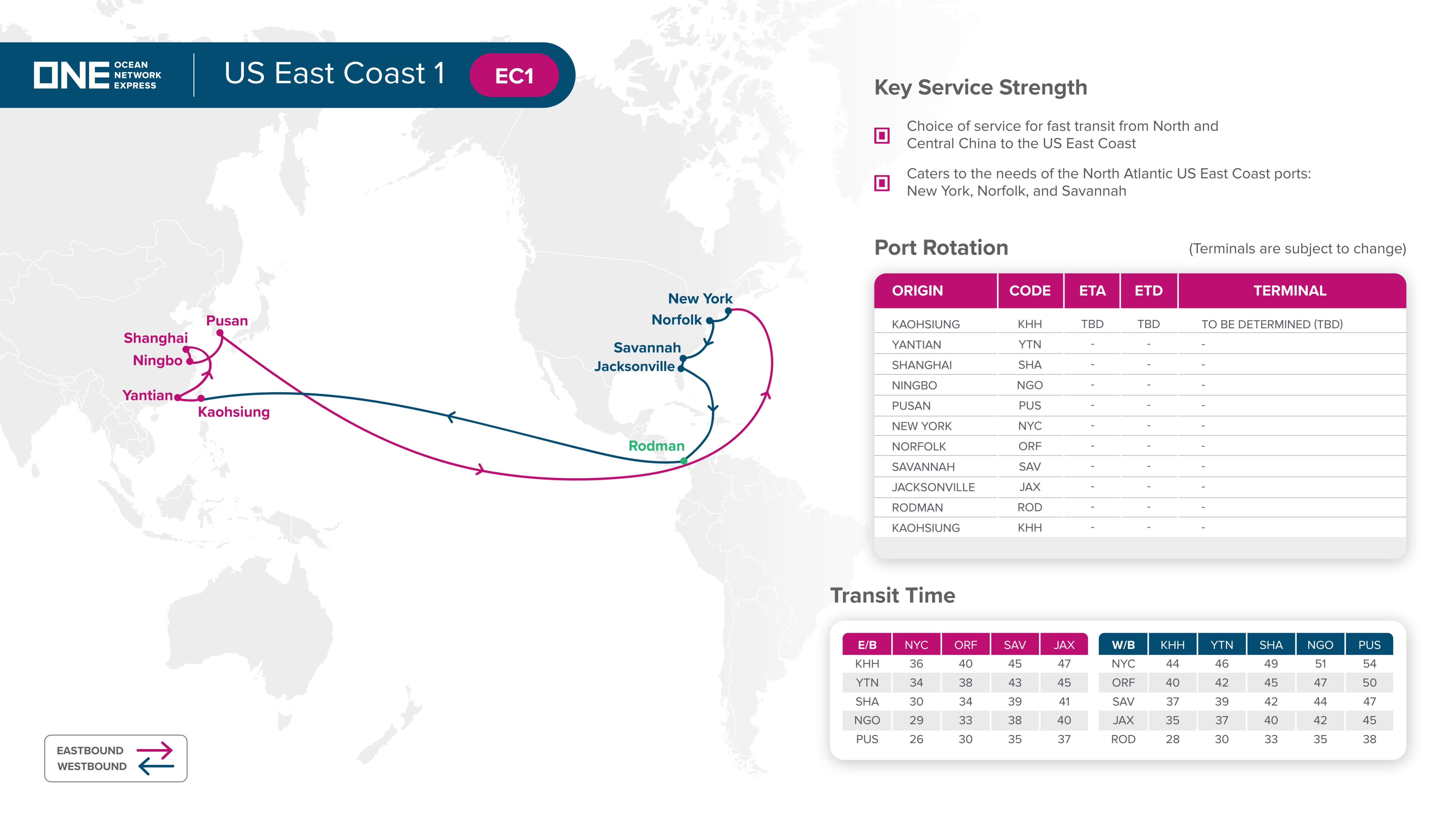
Port Rotation

(Terminals are subject to change)

ORIGIN	CODE	ETA	ETD	TERMINAL
KAOHSIUNG	KHH	TBD	TBD	TO BE DETERMINED (TBD)
YANTIAN	YTN	-	-	-
SHANGHAI	SHA	-	-	-
NINGBO	NGO	-	-	-
PUSAN	PUS	-	-	-
NEW YORK	NYC	-	-	-
NORFOLK	ORF	-	-	-
SAVANNAH	SAV	-	-	-
JACKSONVILLE	JAX	-	-	-
RODMAN	ROD	-	-	-
KAOHSIUNG	KHH	-	-	-

Transit Time

E/B	NYC	ORF	SAV	JAX	W/B	KHH	YTN	SHA	NGO	PUS
KHH	36	40	45	47	NYC	44	46	49	51	54
YTN	34	38	43	45	ORF	40	42	45	47	50
SHA	30	34	39	41	SAV	37	39	42	44	47
NGO	29	33	38	40	JAX	35	37	40	42	45
PUS	26	30	35	37	ROD	28	30	33	35	38





Key Service Strength

- South Atlantic service between Central and South China via Panama
- Fast transit service to Savannah, Charleston and Jacksonville

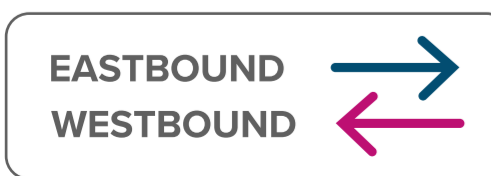
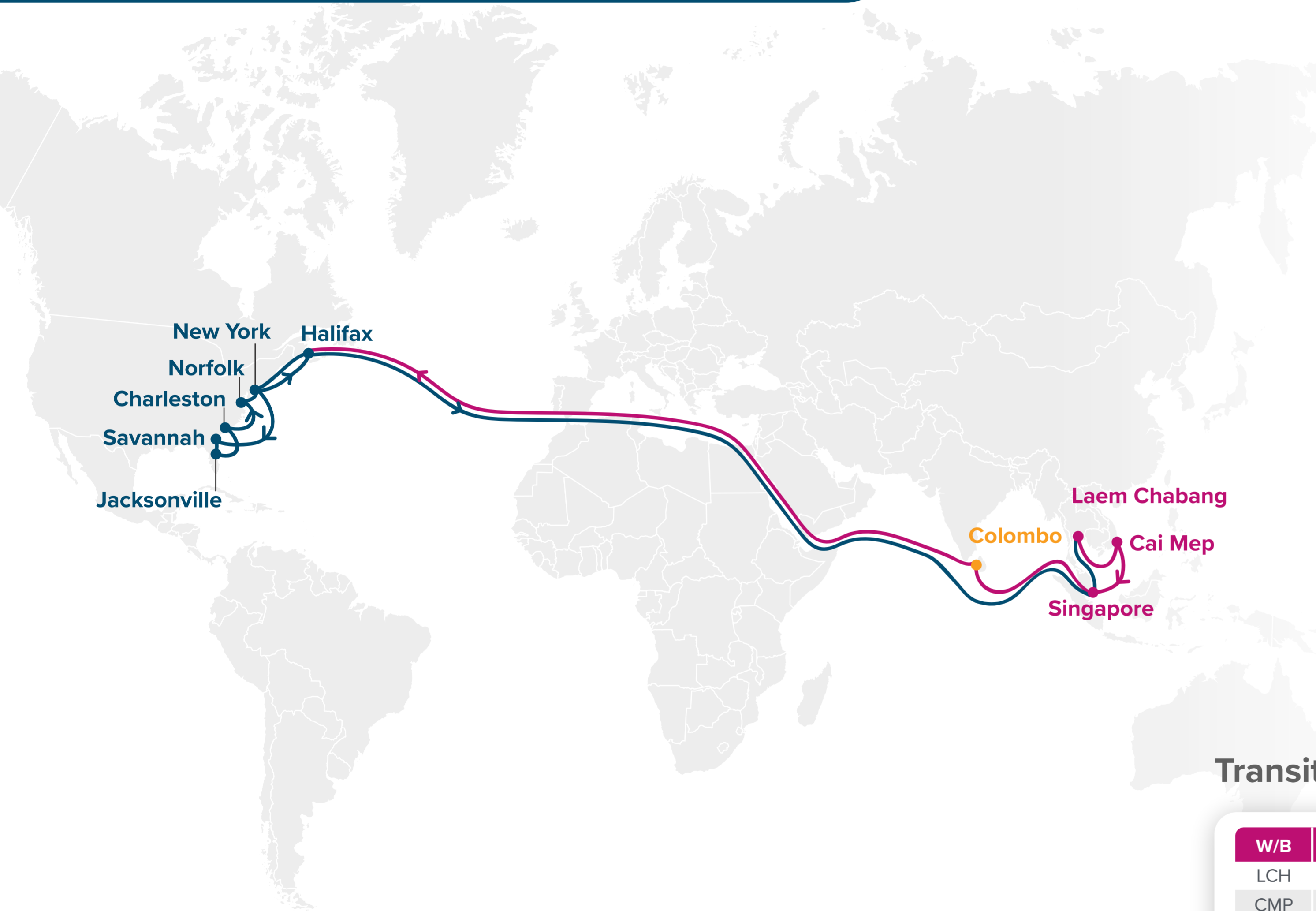
Port Rotation

(Terminals are subject to change)

ORIGIN	CODE	ETA	ETD	TERMINAL
XIAMEN	XMN	TBD	TBD	TO BE DETERMINED (TBD)
YANTIAN	YTN	-	-	-
NINGBO	NGB	-	-	-
SHANGHAI	SHA	-	-	-
PUSAN	PUS	-	-	-
MANZANILLO, PA	MIT	-	-	-
SAVANNAH	SAV	-	-	-
CHARLESTON	CHS	-	-	-
MANZANILLO, PA	MIT	-	-	-
PUSAN	PUS	-	-	-
XIAMEN	XMN	-	-	-

Transit Time

E/B	MIT	SAV	CHS	W/B	PUS	XMN	YTN	NGB	SHA
XMN	30	37	41	SAV	38	42	44	47	48
YTN	28	35	40	CHS	34	38	40	43	44
NGB	25	32	37	MIT	28	32	34	37	38
SHA	23	30	35						
PUS	21	28	33						



Key Service Strength

- ▣ Directly serving Thailand, Vietnam, and two major hub ports of Singapore and Colombo
- ▣ Unique calls to Halifax and Jacksonville

Port Rotation

(Terminals are subject to change)

ORIGIN	CODE	ETA	ETD	TERMINAL
LAEM CHABANG	LCH	TBD	TBD	TO BE DETERMINED (TBD)
CAI MEP	CMP	-	-	-
SINGAPORE	SIN	-	-	-
COLOMBO	CMB	-	-	-
HALIFAX	HAL	-	-	-
NEW YORK	NYC	-	-	-
SAVANNAH	SAV	-	-	-
JACKSONVILLE	JAX	-	-	-
CHARLESTON	CHS	-	-	-
NORFOLK	ORF	-	-	-
NEW YORK	NYC	-	-	-
HALIFAX	HAL	-	-	-
SINGAPORE	SIN	-	-	-
LAEM CHABANG	LCH	-	-	-

Transit Time

W/B	HAL	NYC	SAV	JAX	CHS	ORF	E/B	SIN	LCH	CMP	CMB
LCH	35	37	42	44	46	48	SAV	41	45	50	60
CMP	30	32	37	39	41	43	JAX	40	44	49	59
SIN	26	28	33	35	37	39	CHS	38	42	47	57
CMB	21	23	28	30	32	34	ORF	36	40	45	55
							NYC	33	37	42	52
							HAL	30	34	39	49

Key Service Strength

- Dedicated US Gulf Service via the Panama Canal
- Direct service from Central and South China / South Korea

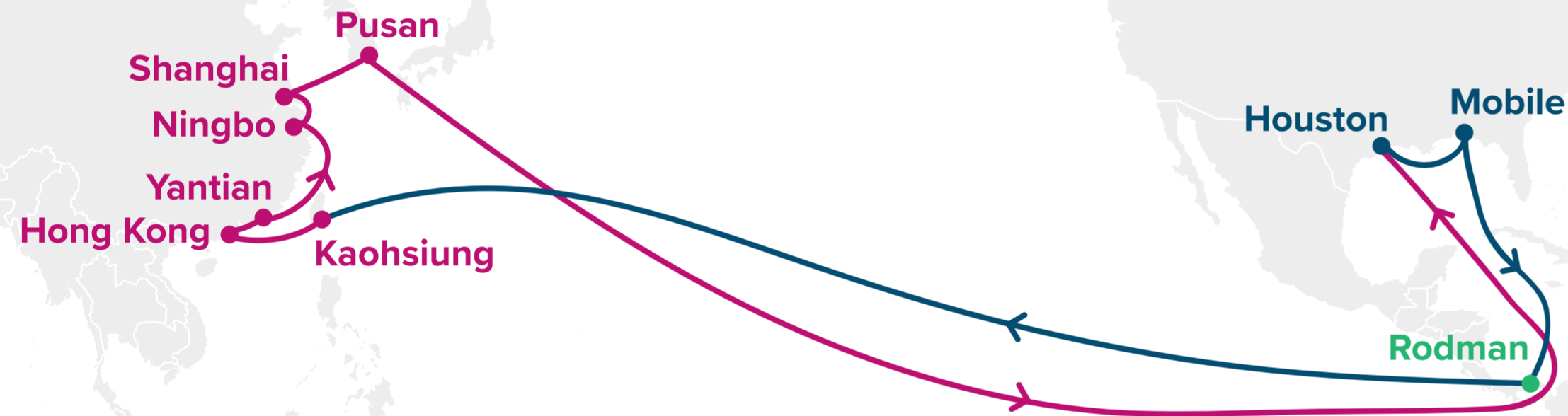
Port Rotation

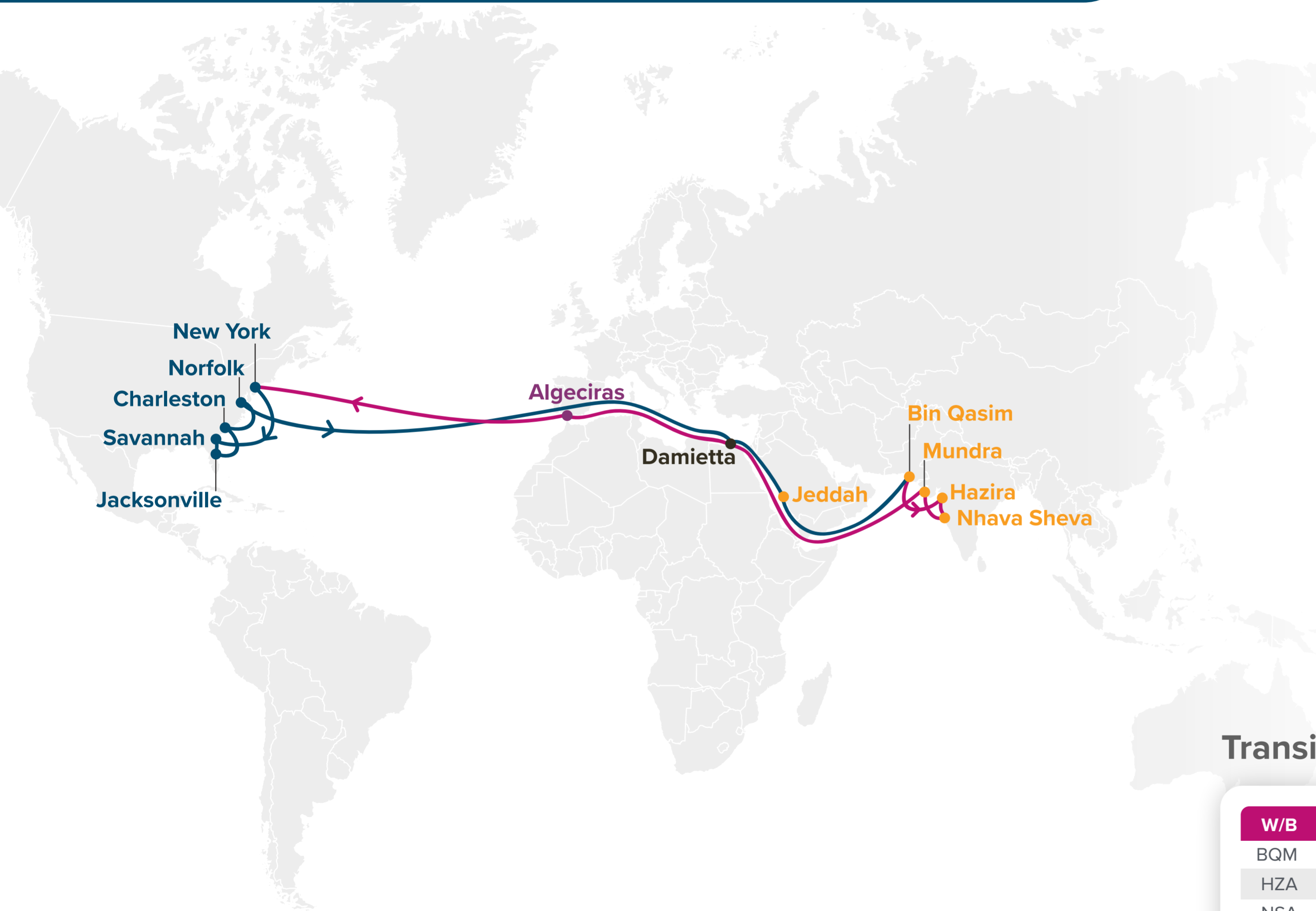
(Terminals are subject to change)

ORIGIN	CODE	ETA	ETD	TERMINAL
KAOHSIUNG	KHH	TBD	TBD	TO BE DETERMINED (TBD)
HONG KONG	HKG	-	-	-
YANTIAN	YTN	-	-	-
NINGBO	NGO	-	-	-
SHANGHAI	SHA	-	-	-
PUSAN	PUS	-	-	-
HOUSTON	HOU	-	-	-
MOBILE	MOB	-	-	-
RODMAN	ROD	-	-	-
KAOHSIUNG	KHH	-	-	-

Transit Time

E/B	HOU	MOB	W/B	KHH	HKG	YTN	NGO	SHA	PUS
KHH	34	40	HOU	38	40	41	44	46	48
HKG	32	38	MOB	36	38	39	42	44	46
YTN	31	37	ROD	29	31	32	35	37	39
NGO	28	34							
SHA	27	33							
PUS	25	31							





Key Service Strength

Specialized service between India/Pakistan and the US East Coast

Port Rotation

(Terminals are subject to change)

ORIGIN	CODE	ETA	ETD	TERMINAL
BIN QASIM	BQM	TBD	TBD	TO BE DETERMINED (TBD)
HAZIRA	HZA	-	-	-
NHAVA SHEVA	NSA	-	-	-
MUNDRA	MUN	-	-	-
DAMIETTA	DAM	-	-	-
ALGECIRAS	ALG	-	-	-
NEW YORK	NYC	-	-	-
SAVANNAH	SAV	-	-	-
JACKSONVILLE	JAX	-	-	-
CHARLESTON	CHS	-	-	-
NORFOLK	ORF	-	-	-
DAMIETTA	DAM	-	-	-
JEDDAH	JED	-	-	-
BIN QASIM	BQM	-	-	-

Transit Time

W/B	NYC	SAV	JAX	CHS	ORF	E/B	JED	BQM	HZA	NSA	MUN
BQM	28	31	33	34	37	NYC	26	33	35	36	38
HZA	26	29	31	32	35	SAV	23	30	32	33	35
NSA	25	28	30	31	34	JAX	22	29	31	32	34
MUN	22	25	27	28	31	CHS	20	27	29	30	32
						ORF	18	25	27	28	30

AT1

- Southampton
- Antwerp
- Rotterdam
- Bremerhaven
- Le Havre
- New York
- Norfolk
- Baltimore
- Southampton

AT2

- Le Havre
- Rotterdam
- Antwerp
- Bremerhaven
- Charleston
- Savannah
- Le Havre

AT3

- Southampton
- Rotterdam
- Antwerp
- Bremerhaven
- Veracruz
- Altamira
- Houston
- New Orleans
- Southampton

AL5

- Southampton
- Le Havre
- Rotterdam
- Hamburg
- Antwerp
- Miami
- Cartagena
- Rodman
- LA/LB
- Oakland
- Rodman
- Caudedo
- Southampton

AT1: Transatlantic 1

AT2: Transatlantic 2

AT3: Transatlantic 3

AL5: Transatlantic 5

4 choices of services that provide extensive coverage of key ports to meet your direct connection needs across North Europe and East Coast North America.





Key Service Strength

Seamless connection from key European hubs to major US ports.

Port Rotation

(Terminals are subject to change)

ORIGIN	CODE	ETA	ETD	TERMINAL
SOUTHAMPTON	SOU	THU	FRI	TO BE DETERMINED (TBD)
ANTWERP	ANR	SUN	MON	-
ROTTERDAM	RTM	TUE	WED	-
BREMERHAVEN	BRV	FRI	SUN	-
LE HAVRE	LEH	MON	TUE	-
NEW YORK	NYC	WED	FRI	-
NORFOLK	ORF	SAT	MON	-
BALTIMORE	BAL	FRI	SAT	-
SOUTHAMPTON	SOU	THU	FRI	-

Transit Time

W/B	NYC	ORF	BAL	E/B	SOU	ANR	RTM	BRV	LEH
SOU	19	22	28	NYC	20	23	25	28	31
ANR	16	19	25	ORF	17	20	22	25	28
RTM	14	17	23	BAL	12	15	17	20	23
BRV	10	13	19						
LEH	8	11	17						



Key Service Strength

█ Fast connection to US Southeastern Coastal region.

Port Rotation

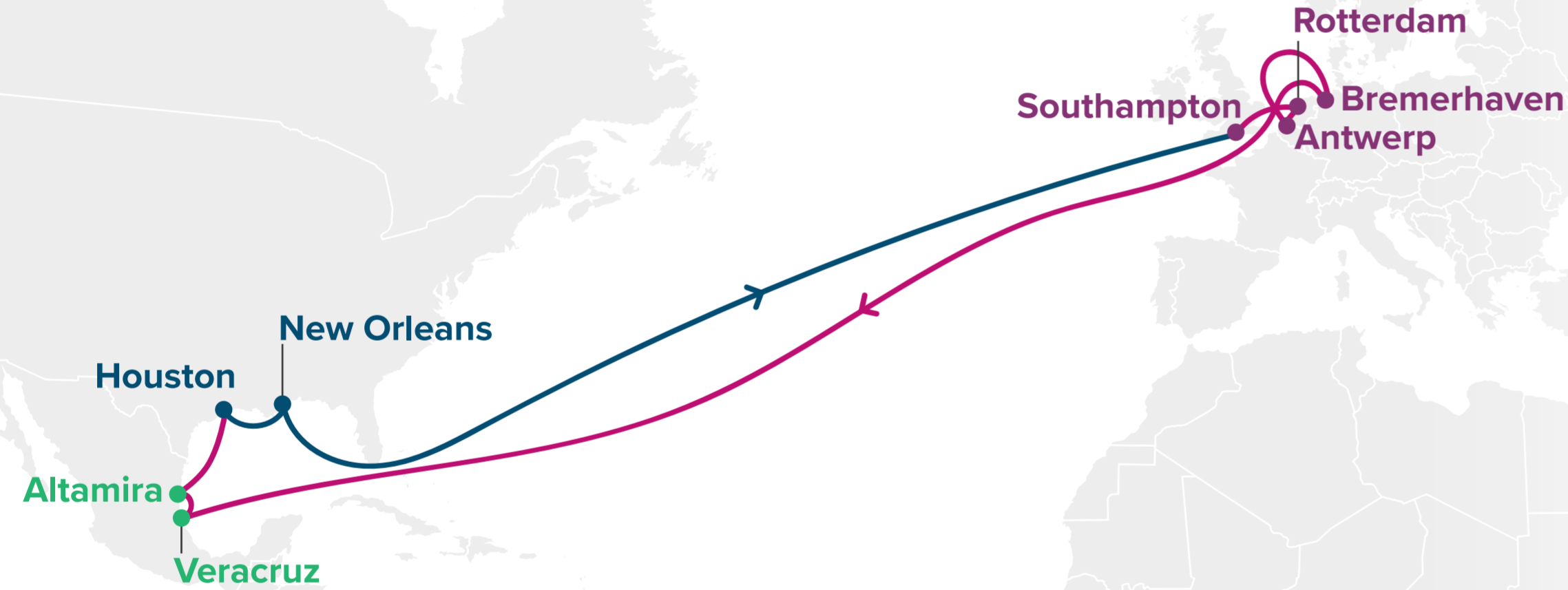
(Terminals are subject to change)

ORIGIN	CODE	ETA	ETD	TERMINAL
LE HAVRE	LEH	FRI	SAT	TO BE DETERMINED (TBD)
ROTTERDAM	RTM	MON	TUE	-
ANTWERP	ANR	WED	WED	-
BREMERHAVEN	BRV	FRI	SAT	-
CHARLESTON	CHS	TUE	THU	-
SAVANNAH	SAV	FRI	TUE	-
LE HAVRE	LEH	FRI	SAT	-

Transit Time

W/B	CHS	SAV	E/B	LEH	RTM	ANR	BRV
LEH	17	20	CHS	15	18	20	22
RTM	14	17	SAV	10	13	15	17
ANR	13	16					
BRV	10	13					





Key Service Strength

 Connection to Latin America available via Mexico.

Port Rotation

(Terminals are subject to change)

ORIGIN	CODE	ETA	ETD	TERMINAL
SOUTHAMPTON	SOU	TUE	WED	TO BE DETERMINED (TBD)
ROTTERDAM	RTM	THU	FRI	-
ANTWERP	ANR	SAT	SUN	-
BREMERHAVEN	BRV	TUE	WED	-
VERACRUZ	VER	THU	FRI	-
ALTAMIRA	ATM	SUN	MON	-
HOUSTON	HOU	WED	THU	-
NEW ORLEANS	MSY	SAT	SUN	-
SOUTHAMPTON	SOU	TUE	WED	-

Transit Time

W/B	VER	ATM	HOU	MSY	E/B	SOU	RTM	ANR	BRV
SOU	22	25	28	31	VER	25	27	29	32
RTM	20	23	26	29	ATM	22	24	26	29
ANR	18	21	24	27	HOU	19	21	23	26
BRV	15	18	21	24	MSY	16	18	20	23



Key Service Strength

- Complete, all-round coverage in Europe to US Southeast as well as to US West Coast.
- Connection to Latin America available via Colombia, Dominican Republic, and Panama.

Port Rotation

(Terminals are subject to change)

ORIGIN	CODE	ETA	ETD	TERMINAL
SOUTHAMPTON	SOU	MON	TUE	TO BE DETERMINED (TBD)
LE HAVRE	LEH	WED	THU	-
ROTTERDAM	RTM	FRI	SAT	-
HAMBURG	HAM	SUN	MON	-
ANTWERP	ANR	WED	THU	-
MIAMI	MIA	TUE	TUE	-
CARTAGENA	CTG	FRI	SAT	-
RODMAN	ROD	TUE	TUE	-
LOS ANGELES	LAX	THU	SAT	-
OAKLAND	OAK	MON	TUE	-
RODMAN	ROD	THU	FRI	-
CAUDEDO	CAU	TUE	WED	-
SOUTHAMPTON	SOU	MON	TUE	-

Transit Time

W/B	MIA	CTG	ROD	LAX	OAK	E/B	SOU	LEH	RTM	HAM	ANR
SOU	21	24	26	28	37	LAX	30	32	34	36	39
LEH	19	22	24	26	35	OAK	27	29	31	33	36
RTM	17	20	22	24	33	ROD	17	19	21	23	26
HAM	15	18	20	22	31	CAU	12	14	16	18	21
ANR	12	15	17	19	28						

Your Number **ONE** Shipping Partner

- Connecting the
East and the West



Ocean Network Express Pte. Ltd.
7 Straits View, #16-01 Marina One East Tower, Singapore 018936
www.one-line.com